

SENCOR®

SWS 1918



User's manual

Návod k obsluze

Návod na obsluhu

Használati útmutató

Instrukcja obsługi

LED DUAL ALARM CLOCK
WITH USB CHARGING

LED BUDÍK SE DVĚMA ALARMY
A USB NABÍJENÍM

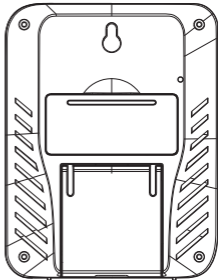
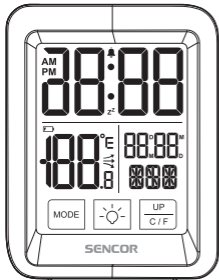
LED BUDÍK S DVOMA ALARMAMI
A USB NABÍJANÍM

USB-N TÖLTHETŐ ÉBRESZTŐÓRA
KETTŐS ÉBRESZTÉS FUNKCIÓVAL

LED BUDZIK Z DWOMA ALARMAMI
I ŁADOWANIEM USB

EN CZ SK HU PL

OVERVIEW



FEATURES

- LCD Display with short white backlight
- Touch Buttons on the Screen
- Digital Time with 12/24 hours Selectable
- Calendar with 7 Weekday Languages
- Indoor Temperature with °C/°F Selectable
- Indoor Temperature Range: -10°C to +50°C, with resolution 0.1°C
- Temperature Trends Indicator
- Wake up with Buzzer
- Snooze Function (5 minutes)
- Low battery Indicator
- Desktop Placement or Wall Mountable

BATTERY ASSEMBLING

Open the battery compartment cover. Insert 2xAAA batteries according to the correct polarity showed in the compartment.

3 TOUCH BUTTONS: MODE  UP/C/F

BACK LIGHT

Press  to switch on backlight, it will last for 5 seconds


TIME SETTING

Under normal displaying mode, hold on pressing 'MODE' button for seconds to enter into time setting mode, the setting digit will be flashing. Press "UP/C/F" to adjust. The setting order is Year →DM/MD →Month →Date → language of week →12/24hr → hour → minute . Press 'MODE' button to confirm the setting.

If there is no operation in 20 seconds, it will turn to normal time displaying mode automatically.


ALARM & SNOOZE SETTING

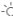

Press Mode button once to enter into Alarm Display Mode.

Under alarm display mode, hold on pressing "MODE" button for seconds to enter into alarm setting mode, the setting digit will be flashing. Press "UP/C/F" button to adjust. The setting order is hour → minute. Press "MODE" button to confirm the setting. Press "UP/C/F" button again to turn on the alarm function. There would be an icon of  display on the screen. Press "UP/C/F" button once more to turn off the alarm function. The alarm icon would disappear.


The alarm sound will last for 2 minutes, and will change as below:

- 0-10 seconds: BI per second
- 11-20 seconds: BI BI per second
- 21-30 seconds: BI BI BI per second
- >30 seconds: Keep BI

When alarm ring is on, the icon of  will flash, white backlight will light up 5 seconds, press 'MODE' or 'UP/C/F' button to turn off the alarm directly. The alarm will be on again after 24 hours.

When alarm ring is on, press  button to turn on the Snooze function,  icon will flash by the same frequency, the alarm sound will be on again after 5 minutes.

When the snooze function is on, press MODE" or "UP/C/F" button to turn off the snooze function.

Press  button to turn on the backlight. The backlight will last about 5 seconds.

TEMPERATURE

The indoor temperature will adjust within 30 seconds automatically after powering on. Press "UP/C/F" button to change between °C/°F.

INDOOR temperature range -10°C -50°C.

LL.L & HH.H will display when out of range.

7 LANGUAGE WEEK DISPLAY

Language	German	English	Italian	French	Dutch	Spanish	Denmark
	GER	ENG	ITA	FRE	DUT	SPA	DAN
SUNDAY	SON	SUN	DOM	DIM	ZON	DOM	SON
MONDAY	MON	MON	LUN	LUN	MAA	LUN	MAN

Language	German	English	Italian	French	Dutch	Spanish	Denmark
	GER	ENG	ITA	FRE	DUT	SPA	DAN
TUESDAY	DIE	TUE	MAR	MAR	DIN	MAR	TIR
WEDNESDAY	MIT	WED	MER	MER	WOE	MIE	ONS
THURSDAY	DON	THU	GIO	JEU	DON	JUE	TOR
FRIDAY	FRE	FRI	VEN	VEN	VRI	VIE	FRE
SATURDAY	SAM	SAT	SAB	SAM	ZAT	SAB	LOR

POSITIONED METHODS

The weather station can be positioned in 2 ways as desired.

1. Pull out the table stand brackets from the rear of the clock, place on table or desk as desired.
2. Hang on the wall by hanging hole.

PRECAUTIONS

- Do not clean any part of the product with benzene, thinner or other solvent chemicals. When necessary, clean it with a soft cloth.
- Never immerse the product in water. This will damage the product.
- Do not subject the product to extreme force, shock, or fluctuations in temperature or humidity.
- Do not tamper with the internal components.
- Do not mix new and old batteries or batteries of different types.
- Do not mix alkaline, standard or rechargeable batteries with this product.
- Remove the batteries if storing this product for a long period of time.
- Do not dispose of this product as unsorted municipal waste. Collection of such waste separately for special treatment is necessary.

INSTRUCTIONS AND INFORMATION REGARDING THE DISPOSAL OF USED PACKAGING MATERIALS

Dispose of packaging material at a public waste disposal site.

DISPOSAL OF USED ELECTRICAL AND ELECTRONIC APPLIANCES



The meaning of the symbol on the product, its accessory or packaging indicates that this product shall not be treated as household waste. Please, dispose of this product at your applicable collection point for the recycling of electrical & electronic equipment waste. Alternatively in some states of the European Union or other European states you may return your products to your local retailer when buying an equivalent new product. The correct disposal of this product will help save valuable natural resources and help in preventing the potential negative impact on the environment and human health, which could be caused as a result of improper liquidation of waste. Please ask your local authorities or the nearest waste collection centre for further details. The improper disposal of this type of waste may fall subject to national regulations for fines.

For business entities in the European Union

If you wish to dispose of an electrical or electronic device, request the necessary information from your seller or supplier.

Disposal in other countries outside the European Union

If you wish to dispose of this product, request the necessary information about the correct disposal method from local government departments or from your seller.



The product meets EU requirements.

Changes to the text, design and technical specifications may occur without prior notice and we reserve the right to make these changes.

The original version is in the Czech language.

Address of the manufacturer:

FAST ČR, a.s., Černokostelecká 1621, Říčany CZ-251 01

EN Warranty conditions

Warranty card is not a part of the device packaging.

This product is warranted for the period of 24 months from the date of purchase to the end-user. Warranty is limited to the following conditions. Warranty is referred only to the customer goods using for common domestic use. The claim for service can be applied either at dealer's shop where the product was bought, or at below mentioned authorized service shops. The end-user is obligated to set up a claim immediately when the defects appeared but only till the end of warranty period. The end user is obligated to cooperate to certify the claiming defects. Only completed and clean (according to hygienic standards) product will be accepted. In case of eligible warranty claim the warranty period will be prolonged by the period from the date of claim application till the date of taking over the product by end-user, or the date the end-user is obligated to take it over. To obtain the service under this warranty, end-user is obligated to certify his claim with duly completed following documents: receipt, certificate of warranty, certificate of installation.

This warranty is void especially if apply as follows:

- Defects which were put on sale.
- Wear-out or damage caused by common use.
- The product was damaged by unprofessional or wrong installation, used in contrary to the applicable instruction manual, used in contrary to legal enactment and common process of use or used for another purpose which has been designed for.
- The product was damaged by uncared-for or insufficient maintenance.
- The product was damaged by dirt, accident of force majeure (natural disaster, fire, and flood).
- Defects on functionality caused by low duality of signal, electromagnetic field interference etc.
- The product was mechanically damaged (e.g. broken button, fall).

- Damage caused by use of unsuitable media, fillings, expendable supplies (batteries) or by unsuitable working conditions (e.g. high temperatures, high humidity, quakes).
- Repair, modification or other failure action to the product by unauthorized person.
- End-user did not prove enough his right to claim (time and place of purchase).
- Data on presented documents differs from data on products.
- Cases when the claiming product cannot be indentified according to the presented documents (e.g. the serial number or the warranty seal has been damaged).

Authorized service centers

Visit www.sencor.com for detailed information about authorized service centers.