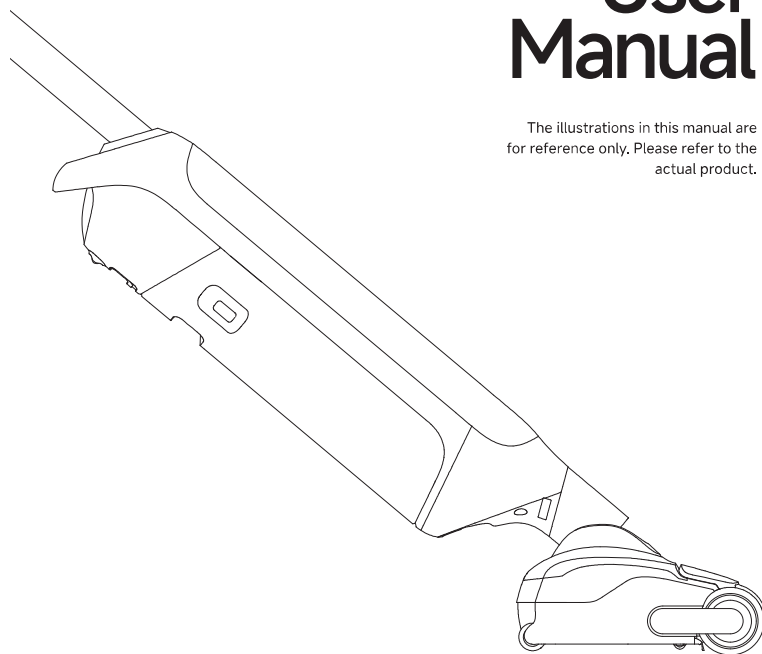


M10

Wet and Dry Vacuum

User Manual

The illustrations in this manual are for reference only. Please refer to the actual product.



Website: www.mova-tech.com
Manufactured by: Moonstone Technology (Shaoxing) Co., Ltd.
Made in China

HMH15A-AU-A02



MOVA

THANK YOU

For purchasing this
Wet and dry vacuum.

For more product information,
please visit www.mova-tech.com



The high-quality product is engineered
for optimal performance.
If you have any questions on the product,
please contact us:
<https://global.mova-tech.com/pages/contact-us>



CONTENTS

Important Safety Instructions	01
Product Overview	04
Installation	08
Charging	08
How to Use	09
Care & Maintenance	13
Troubleshooting	16
Error Prompts and Solutions	17
Specifications	18
Battery Disposal and Removal	18
Warranty	19

Important Safety Instructions

Please read this manual carefully before use and retain it for future reference.

When using an electrical appliance, basic precautions should always be followed, including the following:

READ ALL INSTRUCTIONS BEFORE USING (THIS APPLIANCE). Failure to follow the warnings and instructions may result in electric shock, fire and/or serious injury.

WARNING — To reduce the risk of fire, electric shock, or injury:

Usage Restrictions

- This appliance should not be used by children younger than 8 years old nor persons with physical, sensory, intellectual deficiencies, or limited experience or knowledge without the supervision of a parent or guardian to ensure safe operation and to avoid any risks. Cleaning and maintenance shall not be performed by children without supervision.
- Plastic film can be dangerous. To avoid the danger of suffocation, keep it away from children. Children shall not play with the appliance.
- Use indoors only, on non-carpeted floor surfaces such as vinyl, tile, sealed wood, etc. Be careful not to run over loose objects or the edges of area rugs. Stalling the brush may result in premature belt failure.
- Use only as described in this user guide. Use only manufacturer's recommended attachments.
- Do not expose the appliance to fire or excessive temperature. Exposure to fire or excessive temperature may cause an explosion.
- Do not use in extremely hot or cold environments (below 5° C/41° F or above 40° C/104° F). Please charge the appliance in temperature above 5° C/41° F and below 40° C/104° F.
- Do not immerse the appliance in liquid.
- Do not use to pick up flammable or combustible liquids, such as gasoline. Do not use in areas where flammable or combustible liquids may be present.
- Do not put any object into openings. Do not use the appliance when any opening is blocked. Keep free of dust, lint, hair, and anything that may inhibit air flow.
- Do not pick up toxic material (chlorine bleach, ammonia, drain cleaner, etc.). Do not pick up hard or sharp objects such as glass, nails, screws, coins, etc.
- Do not use the appliance in an enclosed space filled with vapor given off by oil-based paint, paint thinner, some moth-proofing substances, flammable dust, or other explosive or toxic vapour. Do not pick up anything that is burning or smoking, such as cigarettes, matches or hot ashes.
- Do not use the appliance without filters in place.
- Keep hair, loose clothing, fingers, and all parts of the body away from openings and moving parts of the appliance and its accessories.
- Keep ground cables away from the appliance when using it. A hazard may occur if the appliance runs over a supply cord.
- Use extra care when cleaning on stairs.


Maintenance and Storage

- Prevent unintentional starting. Ensure the switch is in the OFF-position before picking up or carrying the appliance. Carrying the appliance with your finger on the switch or turning on the appliance may result in an accident.
- Ensure that the appliance is placed on a horizontal surface. Do not use the appliance at the same position if the appliance is equipped with a brush roller and the handle is not completely upright. Do not store the appliance in a place where it may freeze.
- Switch off and unplug the appliance when not in use, before cleaning, maintaining or servicing it, and before connecting or disconnecting it with a moving brush.
- Do not use an appliance that is damaged or modified. A damaged or modified appliance may exhibit unpredictable behavior resulting in fire, explosion, or risk of injury.
- Do not modify or attempt to repair the appliance except as indicated in the instructions for use and care.
- Do not use the appliance with a damaged attachment (eg: charging base, supply cord etc.). If the appliance or attachment has been dropped, damaged, left outdoors, dropped into water, or is not working as it should, never attempt to operate it. Please have it repaired at an authorized service center.
- Have servicing performed by a qualified repair person using only identical replacement parts. This will ensure that the safety of the appliance is maintained.

Battery and Charging

- For the purpose of recharging the appliance, only use the charging base provided with this appliance. Use only with HCBX charging base.
- Follow all charging instructions and do not charge the appliance outside of the temperature range specified in the battery as doing so increases the risk of fire.
- Charging base is equipped with drying function and only suitable for drying this appliance's brush.
- Keep the charging base cable away from heated surfaces. Do not handle the charging base plug or appliance with wet hands. To unplug, grasp the charging base plug, rather than the cable.
- Do not pull or carry charging base by cable, use cable as a handle, close door on cable, or pull cable around sharp edges or corners.
- Do not use any non-rechargeable battery pack. Failing to do so may cause the lithium-ion battery to catch fire. This appliance contains batteries that can only be replaced by qualified technicians or after-sales service.
- The lithium-ion battery pack contains substances that are hazardous to the environment. Before disposing of the appliance, please first remove the battery pack, then discard, or recycle it in accordance with local laws and regulations of the country or region it is used in.
- The appliance must be disconnected from the power supply when removing the battery. Keep batteries out of the reach of children. Never put batteries in mouth. If swallowed, contact your physician or local poison control.

Important Safety Instructions

- Under abusive conditions, never contact the battery from which the liquid may be ejected. If contact accidentally occurs, rinse with water. If liquid contacts eyes, seek medical help immediately. Liquid ejected from the battery may cause irritation or burns.
- The charging base is capable of charging the 6-cell 4000 mAh battery pack. This charging base should not be used to charge non-rechargeable batteries. Failing to do so may cause the lithium-ion battery to catch fire.
- The charging base is marked with a  icon indicating "Caution: Hot Surface". Do not touch the brush roller, hot water, or heating module of the charging base while self-cleaning with hot water.
- The instructions for appliance with a liquid dispensing system specify the amount and type of the liquid to be used (IEC 60335-2-10).

Symbols



Class II equipment



Time-lag miniature fuse-link where T 3.15A is the symbol for the time/current characteristic



For indoor use only



Read operator's manual



Caution: Hot Surface



WEEE Information

All products bearing this symbol are waste electrical and electronic equipment (WEEE) as in directive 2012/19/EU which should not be mixed with unsorted household waste. Instead, you should protect human health and the environment by handing over your waste equipment to a designated collection point for the recycling of waste electrical and electronic equipment, appointed by the government or local authorities. Correct disposal and recycling will help prevent potential negative consequences to the environment and human health. Please contact the installer or local authorities for more information about the location as well as terms and conditions of such collection points.

We, Moonstone Technology (Shaoxing) Co., Ltd., hereby declares that this equipment is in compliance with the applicable Directives, European Norms, and amendments. The full text of the EU declaration of conformity is available at the following internet address: www.mova-tech.com

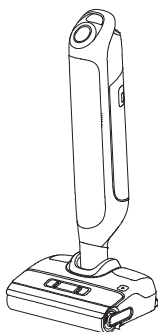
For detailed e-manual, please go to <https://www.mova-tech.com/pages/user-manuals-and-faqs>

EN Product Overview

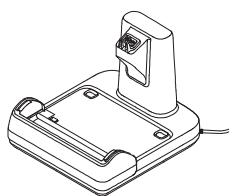
Packing List



Handle



Main Body



Charging Base



Replacement
Filter



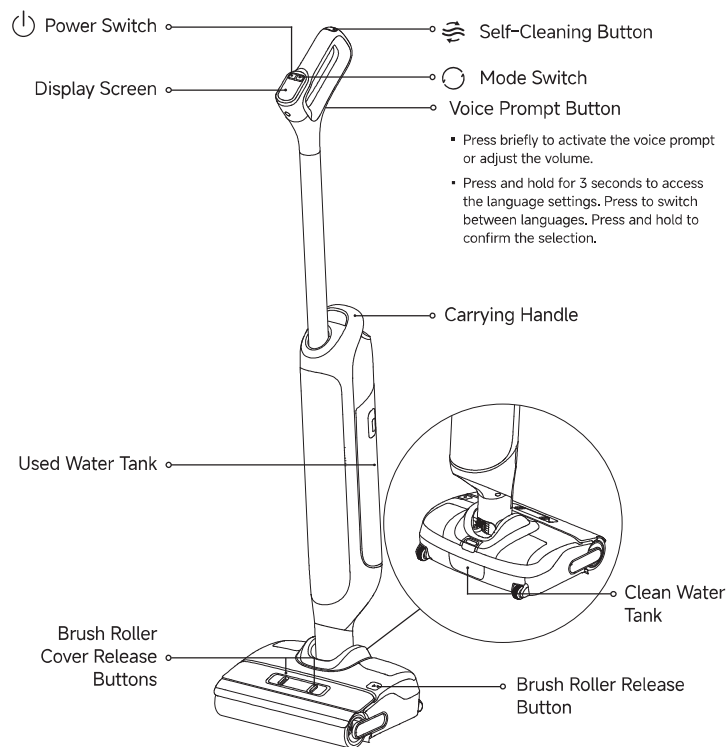
Spare Brush
Roller



Cleaning Brush

Product Overview

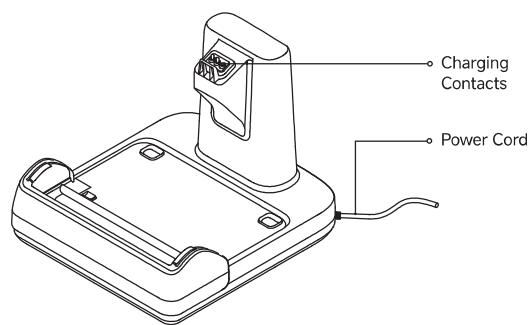
Vacuum



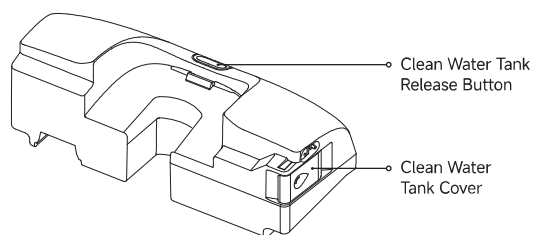
EN

Product Overview

Charging Base



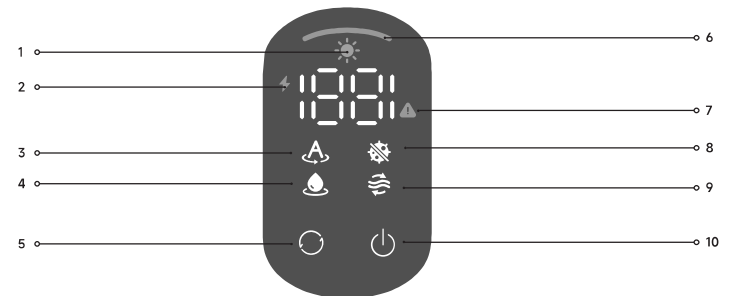
Clean Water Tank



Product Overview

EN

Display Screen

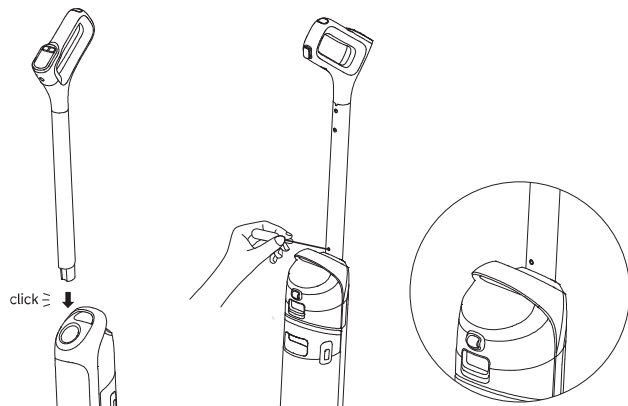


- | | |
|---|--|
| 1 Drying Mode | 6 Dust Concentration Indicator
The color of the indicator changes with the amount of dirt in real time. |
| 2 Low Battery/Charging Indicator | 7 Error Messages |
| 3 Smart Mode | 8 Ultra Mode |
| 4 Suction Mode | 9 Self-Cleaning Mode |
| 5 Mode Switch
Press briefly to switch. | 10 Power Switch
Press briefly to start/stop cleaning. |

Note: If the appliance is not working properly, the display screen will show an error message. Please refer to the Error Prompts and Solutions table to find your solution.

Installation

Insert the end of the handle vertically into the port on the top of the appliance as indicated until you hear a click.



Note: To disassemble, extend a hard object into the hole of the appliance as indicated to press in the contacts and pull the handle upwards at the same time.

Charging

1. Place the charging base against a wall on level ground and connect it to a power source. Fully charge the appliance before first use.
2. Place the appliance on the charging base. The battery is fully charged when the number on the display screen reaches 100.

Charging/Low Battery Indicator

- Breathing Orange: Battery level \leq 20% (charging)
- Breathing Green: Battery level $>$ 20% (charging)
- Solid Green: Full charged
- Solid Orange: Battery level \leq 20%

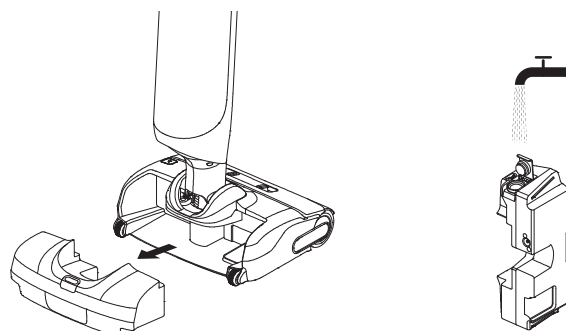
Note:

- If there is no operation within 10 minutes of being fully charged, the vacuum will enter sleep mode. Please restart the appliance if you need to use it.
- To extend the battery life time, the battery keeps cooling down automatically after you have used the appliance for a long time.

How to Use

Filling the Clean Water Tank

Press the Clean Water Tank release button to remove the tank. Open the tank cover and fill the tank with clean water. Install the Clean Water Tank and ensure it clicks into place.



Adding Cleaning Fluid

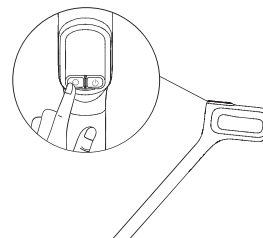
1. Remove the seal before use.
2. Measure the floor cleaner with the bottle cap (*approximately 10 ml/0.34 fl. oz.).
3. Pour it into the Clean Water Tank and gently shake to mix evenly before use.

Note: Do not add any liquids other than the officially-approved cleaner. The cleaner can be available on the official online store.

WARNING: To reduce the risk of fire and electric shock due to internal component damage, use only mova AWH10 cleaning fluid intended for use with the appliance.


Switching Modes

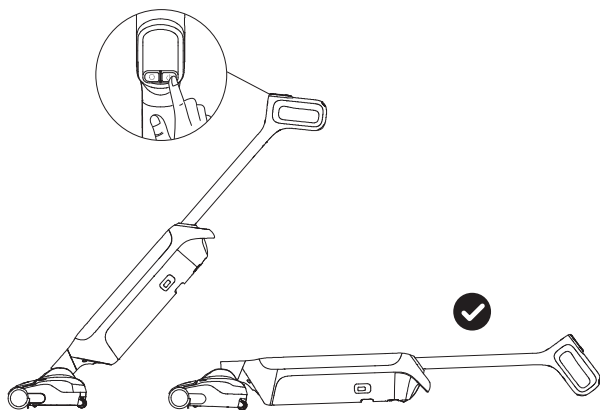
Press the mode switch  to switch modes according to your needs.



How to Use

Starting Cleaning

Gently step on the brush cover and recline the appliance backwards. Press the power switch  to start/stop operating. If the appliance is in the upright position while working, the current task will be suspended. The appliance is designed for lying flat at a 180-degree angle, enabling it to reach and clean under the low-profile furniture.



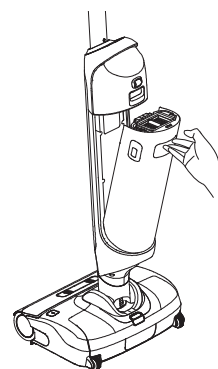
Note:

- Do not vacuum any foamy liquids.
- Make sure the appliance is in upright position before turning off the power while the appliance is lying flat.
- The appliance is suitable for cleaning floors, marble, tiles and other hard surfaces.
- When the appliance is in operation, do not lift it off the ground, move it or tilt it. Otherwise, the used water may flow into the motor.

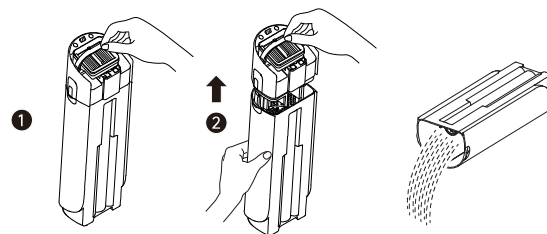
How to Use

Emptying the Used Water Tank

1. Press the Used Water Tank release button to remove the tank.


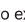


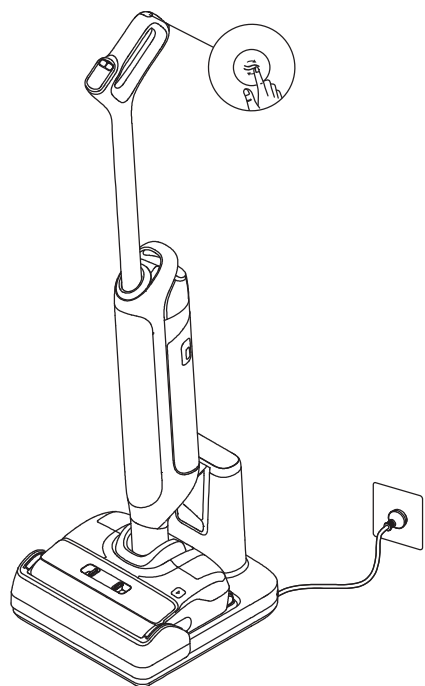
2. Pull up the Used Water Tank cover handle, lift off the cover, and pour out the used water.



How to Use

Self-Cleaning With Hot Water & Drying Mode

1. Place the appliance back onto the base. Ensure that the water in the Clean Water Tank is sufficient for self-cleaning.
2. Briefly press the self-cleaning button  on the top of the handle to start/stop self-cleaning. Switch the self-cleaning with hot water mode according to the voice prompts.
3. Please empty the Used Water Tank after self-cleaning is completed and drying mode has been engaged. Press the button  to exit drying mode.



Note:

- Do not touch the brush roller, hot water, or heating module of the charging base while self-cleaning with hot water.
- The self-cleaning function can be enabled only when the appliance is being charged and the battery level is more than 20%. If the battery level is lower, please charge to 20% before starting self-cleaning.

Care & Maintenance

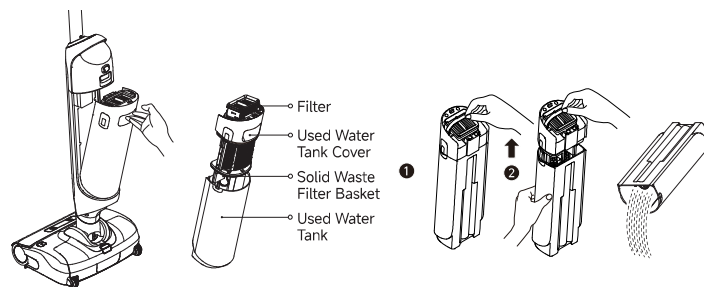
Tips:

- Turn off the appliance before maintenance. Do not touch the power switch.
- Replace parts if needed. The parts must be replaced by those available from the manufacturer or its service agent.
- If the appliance is not used for an extended period, fully charge it, unplug the power plug, and store the appliance in a cool, low-humidity environment away from direct sunlight. To avoid over-discharge of the battery, charge the appliance at least once every 3 months.

Cleaning the Used Water Tank

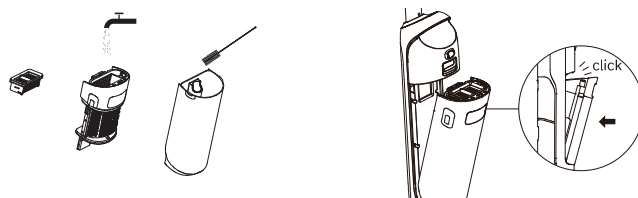
1. Press the Used Water Tank release button to remove the tank.

2. Pull up the Used Water Tank cover handle, lift off the cover. Remove the filter from the cover.



3. Rinse the Used Water Tank and the tank cover with water. Use the provided cleaning brush to clean the inner walls of the tank.

4. Re-install the filter and the Used Water Tank cover. Then re-install the Used Water Tank until you hear a click.

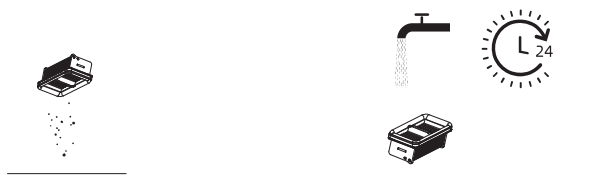


Note: It is recommended to clean the Used Water Tank in time after each use, as well as before and after the self-cleaning.

EN Care & Maintenance

Cleaning the filter

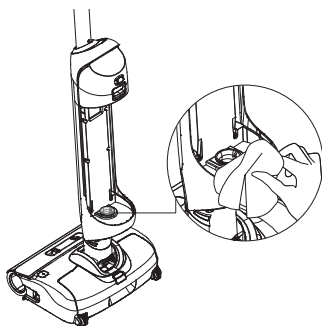
1. Remove the filter and gently knock off the floating dust on the surface.
2. When the filter is dirty and needs washing, rinse it with water. It must be completely dry before use.



Note: Replacing the filter every 3 to 6 months is recommended.

Cleaning the Tube and the Dirt Sensor

Remove the Used Water Tank. Wipe the tube and the dirt sensor with a wet cloth before use.

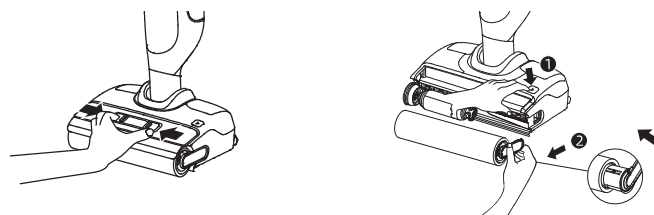


Note: Do not rinse the tube or the dirt sensor.

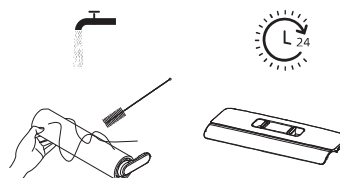
EN Care & Maintenance

Cleaning the Brush Assembly

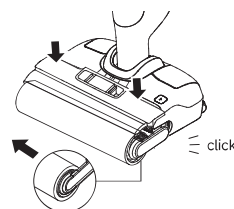
1. Press the brush roller cover release buttons to remove the brush roller cover.
2. Press the brush roller release button and pull the handle to take out the brush roller. Separate the handle from the brush roller.



3. Clear any hair and debris caught on the brush roller with the provided cleaning brush. Rinse the brush roller and the cover with clean water and dry it completely.

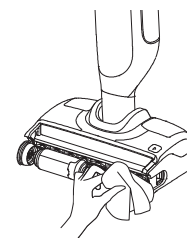


5. Re-install the brush roller and the brush roller cover until you hear a click.



Note:

- Do not rinse the brush assembly with water.
- Clean as needed. Replacing the brush roller every 3 to 6 months is recommended.
- Ensure the Used Water Tank is removed or empty before laying the appliance on its side to clean the roller brush.



4. Wipe the suction inlet with a dry cloth or wet tissue.

EN Troubleshooting

If an error occurs, the appliance will stop working. Please refer to the following table for troubleshooting. If the problem persists, please contact the customer service.

Error	Possible Cause	Solution
The appliance does not work.	The appliance is out of battery or its battery level is low.	Fully charge its battery before use.
	The appliance is in the upright position.	Recline the appliance backwards.
	Blockage activated overheat protection mode.	Clear the blockage and wait until the temperature returns normal.
	The Used Water Tank is full.	Empty the Used Water Tank.
	The parts are not installed in place.	Ensure all parts are all properly in place.
The appliance charges slowly.	The temperature of the battery is too low or too high.	Wait until the battery's temperature returns normal.
The suction power of the appliance is weak.	The filter is clogged.	Clean the filter.
	The suction inlet or tube is blocked by a foreign object.	Clean the tube and the suction inlet.
The motor is making a strange noise.	There is too much dirty water in the Used Water Tank.	Empty the Used Water Tank.
	The suction inlet is blocked.	Clear any blockage in the suction inlet.
The battery level indicator on the display screen does not light up while charging.	The charging base plug is not inserted into the electrical outlet properly.	Make sure the charging base plug is inserted in place.
	The appliance is not placed onto the charging base properly.	Make sure the appliance is placed onto the charging base properly.
No water is coming out of the appliance.	The Clean Water Tank is not properly installed in place, or the water in the Clean Water Tank is insufficient.	Re-install or fill the Clean Water Tank.
	It takes 30 seconds to dampen the brush roller.	Turn on the appliance and check again after a while.

Troubleshooting

EN

The vent leaks water.	A collision or a sharp pull causes water to enter the motor.	Move the appliance gently back and forth while it is turned on.
	The filter is not completely dry after being cleaned.	Dry the filter completely before use.
Self-cleaning fails.	The brush roller may be jammed by large debris.	Remove the brush roller cover to check and clean the brush roller.
	The appliance is not placed onto the charging base properly.	Make sure the appliance is being charged before enabling the self-cleaning function.
	Self-cleaning cannot be enabled if the battery level is lower than 20%.	Self-cleaning can only be enabled while the appliance is being charged and the battery level is more than 20%.
	The Used Water Tank is full.	Empty the Used Water Tank.
	The Clean Water Tank is not installed in place, or the water in the Clean Water Tank is insufficient.	Re-install or fill the Clean Water Tank.
Poor drying performance.	The air outlet and air inlet of the charging base may be blocked.	Check and clear the blockage of air outlet and air inlet.

Error Prompts and Solutions

If the appliance is not working properly, the screen display will show an error message. Please refer to the below table to find your solution.

Error Code	Possible Cause	Solution
E1-E7	Error	Restart the appliance for troubleshooting. If the problem persists, please contact customer service.
F1-F3		
H2/H3/H5/H6		

Vacuum			
Model	HMH15A	Rated Power	300 W
Rated Voltage	21.6V ---	Charging Voltage	27V ---
Clean Water Tank Capacity	800mL	Used Water Tank Capacity	700mL
Charging Time	Approx. 4 hours		
Charging Base			
Model	HCBX	Rated Power Input*	650W
Rated Input	220-240V ~ 50-60Hz	Rated Output	27V --- 1.6A
Protection against harmful ingress of water		IPX1	

* The rated input power refers to the power measured during a representative cycle for entering the drying mode.

Battery Disposal and Removal

The built-in lithium-ion battery contains substances that are hazardous to the environment. Before disposing of the battery, make sure the battery is removed by qualified technicians and discarded at an appropriate recycling facility.

- the battery must be removed from the appliance before it is scrapped;
- the appliance must be disconnected from the supply mains when removing the battery;
- the battery is to be disposed of safely.

CAUTION:

- Before removing the battery, disconnect the power and run out the battery as much as possible.
- Unneeded batteries should be discarded at an appropriate recycling facility.
- Do not expose to high temperature environment to avoid risks of explosion.
- Under abusive conditions, liquid may be ejected from the battery. If contact occurs, flush with water and seek medical help.

Removal Guide

1. Remove the handle by referring to the Installation section.
2. Use a proper tool to remove the top and body decorative covers of the appliance.
3. Remove the wastewater tank, and use a screwdriver to remove all the fixing screws from the body.
4. Remove the fixing screws on the appliance front cover. Remove the cover.
5. Remove the main control board cover, disconnect the battery pack connector cables, and remove the battery from the battery pack assembly.

Warranty

1. MOVA is liable to the consumer for any lack of conformity in material or workmanship not detectable at the time of the purchase.
2. Warranty period: 2 years, starting for the date the product is sold to the consumer or delivered to the consumer (which ever occurs later). If the territory where the consumer is located has different regulations, local regulations prevail.
3. The warranty will not be applicable in the following cases:
 - a) Issues due to carelessness, use, or installation that does not comply with the instructions provided by MOVA.
 - b) Tampering and/or modifications of the product by entities or individuals not expressly authorized by MOVA.
 - c) Damage due to accidental causes and/or negligence on the part of the consumer, with particular reference to external parts.
 - d) Parts subject to wear that do not have manufacturing defects.
 - e) No valid purchasing document (receipt, invoice, or other) is provided to certify the date the product was purchased.
 - f) The model and/or numbers of the product on the purchase certificate is not consistent with the model and/or numbers shown on the product.
4. For more warranty information, please refer to the official MOVA website: www.mova-tech.com
5. For further assistance, please contact us via 07-3737-3143 or <https://global.mova-tech.com/pages/contact-us>.