



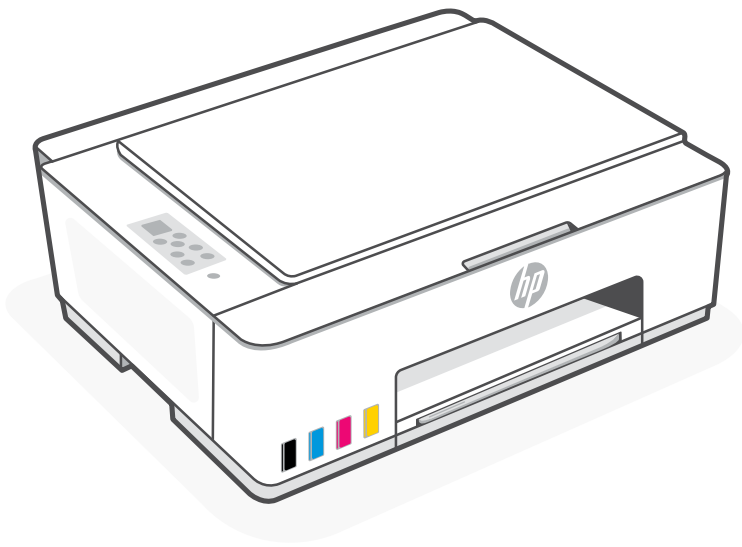
# Setup and Reference Guide

---

ZHCN

设置和参考指南

9

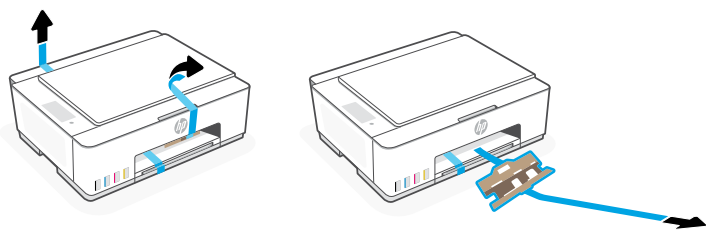


**HP Smart Tank**  
580-590 series

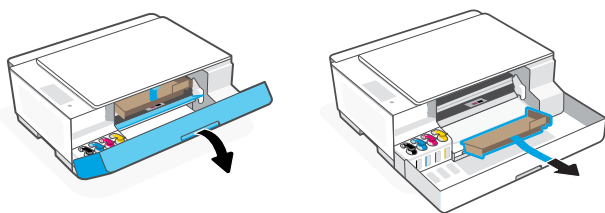
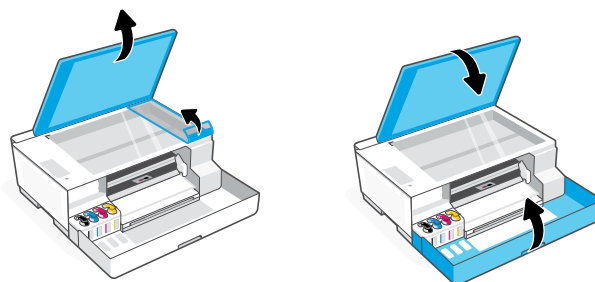


## 1 Remove packaging and power on

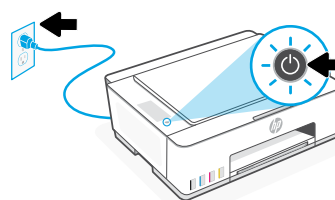
1. Remove all the tape and packing materials.  
**Note:** Keep the packaging materials for repacking in case you need to move the printer.



2. Open the scanner lid and remove the film. Close the scanner lid and front door.



3. Plug in and power on the printer. Keep the printer on during setup.

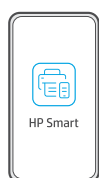


## 2 Choose an option for setting up your printer

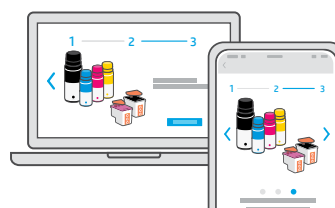
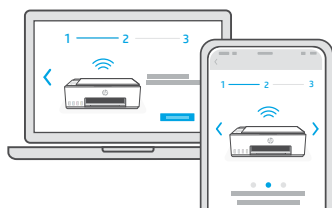
### Recommended

#### Option 1: Guided setup with HP Smart

1. Go to [123.hp.com](https://123.hp.com) on a mobile device or computer to install the HP Smart software.



2. Open **HP Smart**. If prompted, create or sign in to an HP account.
3. On the Home screen, choose the option to add a printer, and follow the instructions to connect the printer to your network (only 2.4 GHz Wi-Fi supported).
4. View animations to fill ink tanks, install printheads, load paper, and perform printheads alignment in HP Smart. HP Smart has everything you need to finish setup.



#### Option 2: Manual setup



Follow illustrations in this guide to set up the hardware, then use the HP Smart software to connect to Wi-Fi and finish setup.

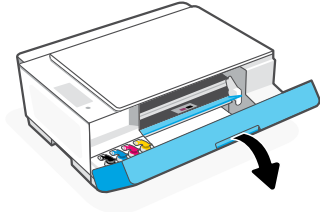


# Manual Setup

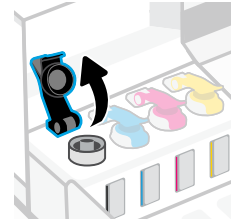
## 1 Fill the ink tanks



1. Open the front door.



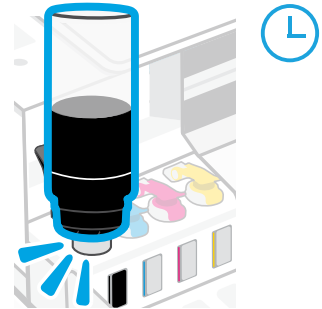
2. Open the cap of the ink tank you want to fill.



3. Twist open the ink bottle.

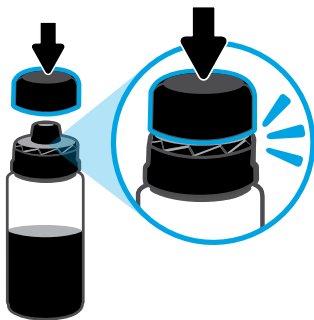


4. Place the bottle upside down onto the tank and click into place. Wait for the ink to fill the tank.  
**Note:** The black bottle will have ink left in the bottle.

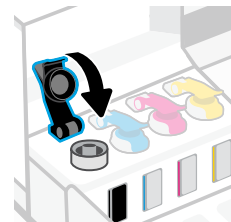


5. Close the ink bottle, firmly pushing the cap onto the bottle.

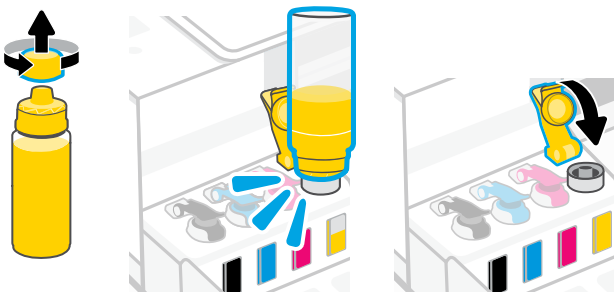
**Note:** If there is ink left in the bottle, close the bottle properly and store upright in a cool, dark place.




6. Securely close the tank cap.

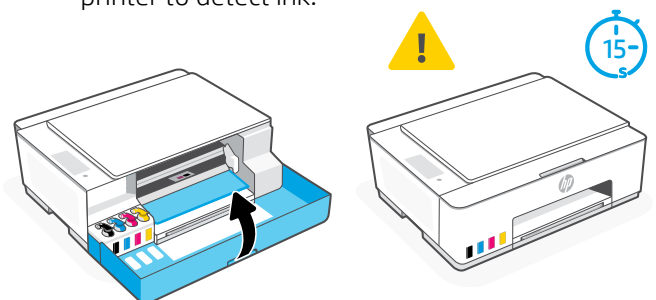


7. Repeat to fill all tanks.



8. Close the front door.

 Wait approximately 15 seconds for the printer to detect ink.





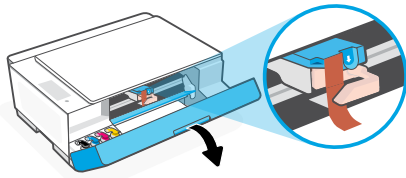
## 2 Install printheads



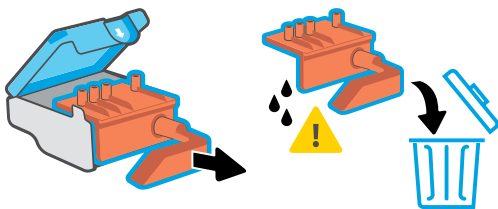
Before installing printheads, ensure the following:

- The printer is on.
- All four ink tanks are filled.
- You have closed the front door for approximately 15 seconds after filling ink.

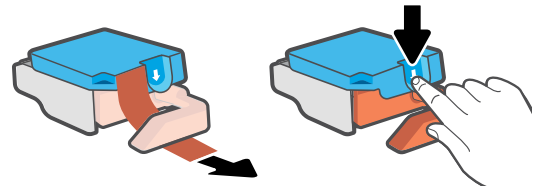
1. Open the front door. Make sure the print carriage has moved to the center; if not, close the door for 15 seconds.



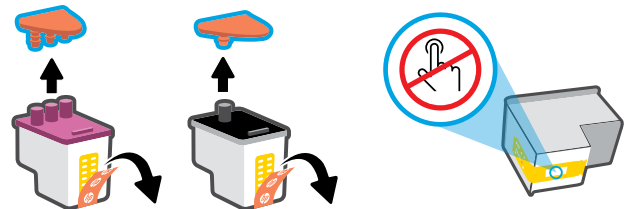
3. Remove and discard the orange guard.  
**Note:** Keep the guard upright; handle carefully to avoid ink leaks.



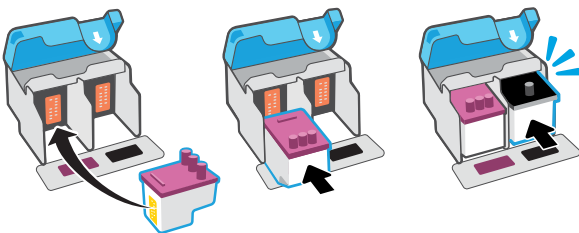
2. Remove the orange tape from the printhead cover. Press and release the blue latch to open the printhead cover.



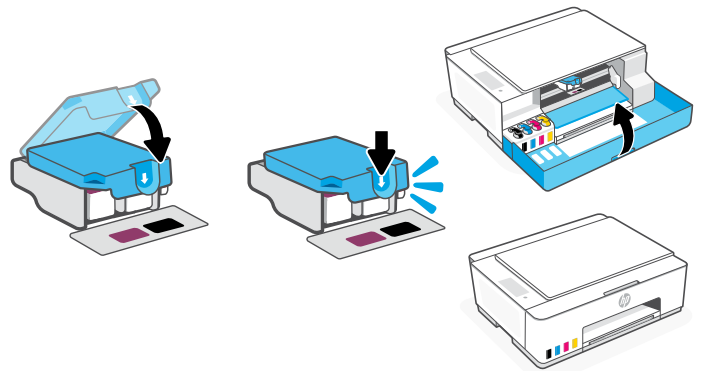
4. Remove the orange cap and tape from both printheads.  
**Caution:** Do not touch the electric contacts or print nozzles under the tape.



5. Insert the printhead and click into place. Repeat to install the other printhead.  
**Note:** Make sure the electric contacts are facing inside.

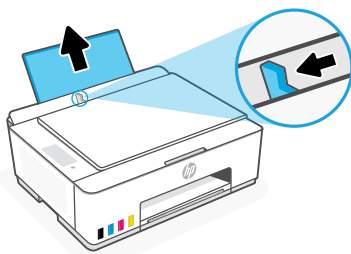


6. Close the printhead cover and the front door.  
**Note:** Make sure the printhead cover is properly closed.

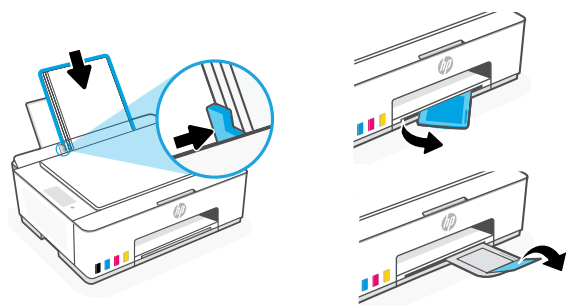


## 3 Load paper

1. Pull up the paper tray, and slide out the paper guide.

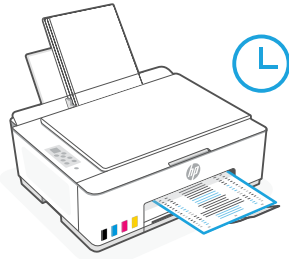



2. Load new, unused Letter or A4 paper, and adjust the paper guide. Open the output tray extender.



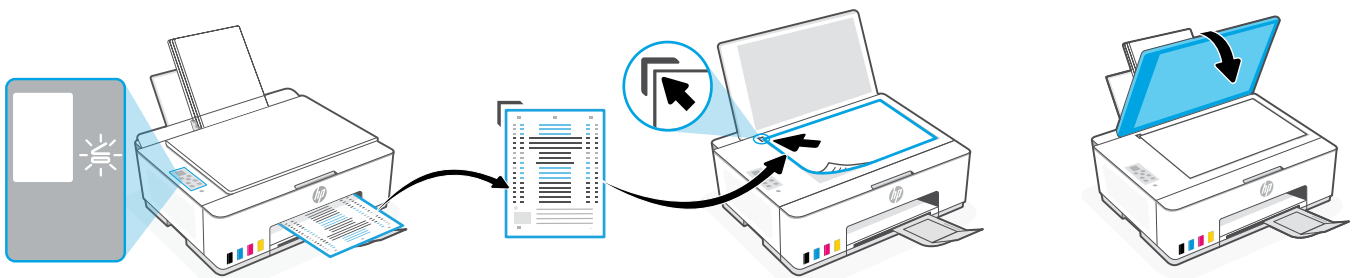
## 4 Scan the printhead alignment page

1. After loading paper, wait for the alignment page to print.

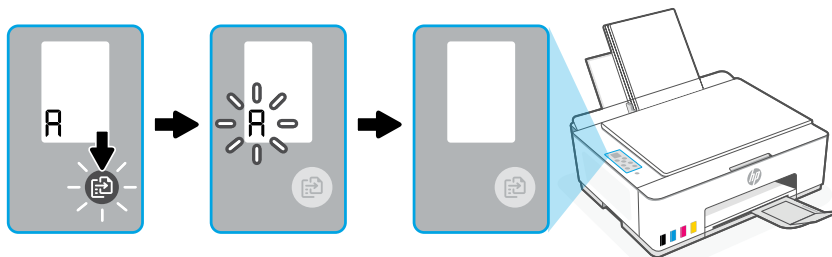


2. When the **Open Lid** light  blinks, open the scanner lid and place the printed page face-down on the scanner glass, aligned to the indicated corner. Close the scanner lid.

**Note:** Make sure you scan the alignment page printed by the printer.




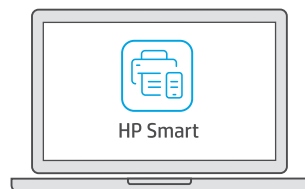
3. Press the blinking copy button to scan the page.  
On the printer display, the icon "A" blinks during the scan and disappears when alignment is done.



Printer hardware setup is complete after printhead alignment is done.

## 5 Install the HP Smart software

1. Make sure the **Wi-Fi** light  on the printer control panel is blinking. If not, see the **Help and tips for Wi-Fi and connectivity** section in this guide.
2. Install the HP Smart software from **123.hp.com** on a computer or mobile device.



[123.hp.com](https://123.hp.com)

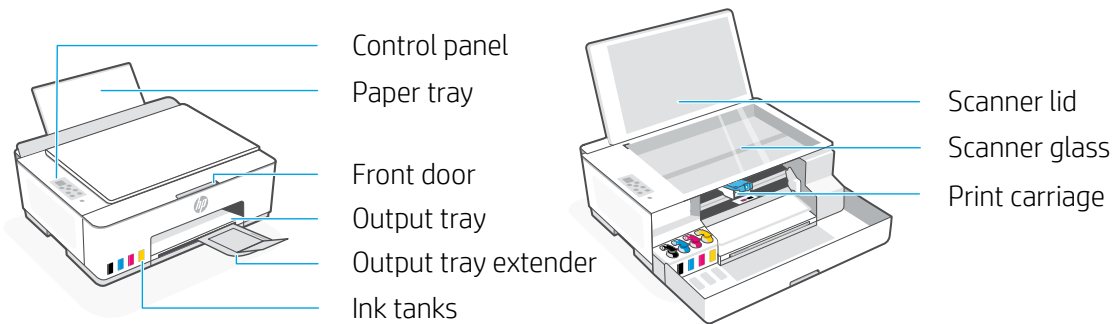
3. Open **HP Smart**. If prompted, create or sign in to an HP account.
4. On the Home screen, choose the option to add a printer, and follow the instructions to connect the printer to your network (only 2.4 GHz Wi-Fi supported).



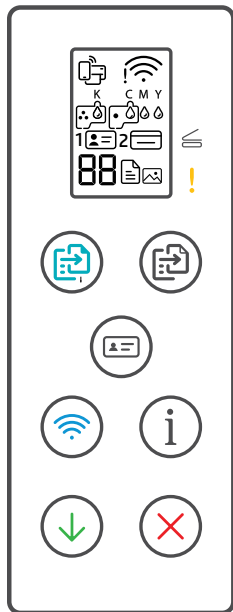
Get help with setup  
Find setup information and videos online.  
[hp.com/support/printer-setup](https://hp.com/support/printer-setup)







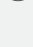





# Printer Reference

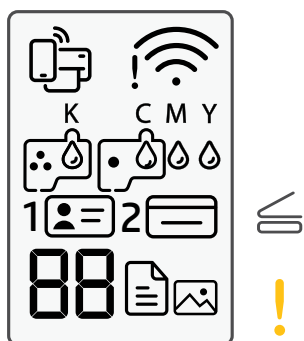







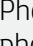
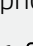




## Control panel buttons and lights



-  **Power** button: Turn the printer on or off.
-  **Open Lid** light: Open the scanner lid to copy or scan.
-  **Attention** light: Indicates problems with paper, ink, or printheads.
-  **Color Copy** button: Start color copying.
-  **Black Copy** button: Start black-and-white copying.  
**Note:** For multiple copies, press multiple times or press and hold.
-  **ID Copy** button: Place a card anywhere on scanner glass to copy both sides onto same page.
-  **Wi-Fi** button/light: Turn on or off Wi-Fi. The light indicates Wi-Fi status.
-  **Information** button: Print summary of printer settings and status.
-  **Resume** button: Resume a job after a disruption.
-  **Cancel** button: Cancel the current job.

## Control panel display

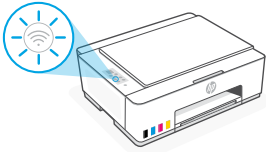





-  Wi-Fi Direct status.
-  Wi-Fi status and signal strength.
-  **K C M Y**  
 Ink related issues, including low on ink.
-  Photo Copy mode for copying on photo paper.
-  **1**  Place the front of ID card on scanner glass.
-  **2**  Place the back of ID card on scanner glass.
-  **E1/E2**  
Media related issues, including out of paper.
- E3**  
Print carriage jam or printhead cover not closed.
- E4**  
Paper jam.
- E7**  
Out of ink.
-  **E7**  
Printhead related issues.  
**Note:** Do not open the printhead cover unless instructed.

## Help and tips for Wi-Fi and connectivity

If the software is unable to find your printer during setup, check the following conditions to resolve the issue.

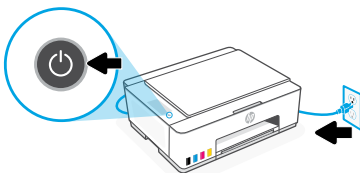
**Note:** This printer only supports a 2.4 GHz Wi-Fi connection.

Potential Issue	Solution
<p>Printer Wi-Fi setup mode timed out</p> 	<p>If the Wi-Fi light is off, the printer might not be in Wi-Fi setup mode. Restart Wi-Fi setup mode:</p> <ol style="list-style-type: none"> <li>1. Press and hold  for 5 seconds until the control panel buttons light up.</li> <li>2. Press and hold  and  for 5 seconds until the Wi-Fi light blinks blue.</li> <li>3. Wait for one minute. Close and reopen HP Smart, and then try connecting again.</li> </ol>
<p>Computer or mobile device too far from printer</p>	<p>Move your computer or mobile device closer to the printer. Your device might be out of range of the printer's Wi-Fi signal.</p>
<p>Computer connected to a Virtual Private Network (VPN) or remote work network</p>	<p>Disconnect from a VPN before installing HP Smart software. You can't install apps from the Microsoft Store when connected to a VPN. Connect to the VPN again after finishing printer setup.</p> <p><b>Note:</b> Consider your location and the security of the Wi-Fi network before disconnecting from a VPN.</p>
<p>Bluetooth is turned off on your computer or mobile device</p> <p>Location is turned off on your mobile device</p>	<p>Turn on Bluetooth for the computer or mobile device being used to complete printer setup. For mobile devices, turn on Location services also. Bluetooth and Location help the software find your network and printer.</p> <p><b>Note:</b> Your location is not being determined and no location information is being sent to HP as part of the setup process.</p>

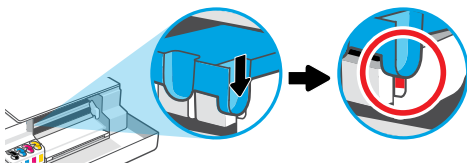
## Move printer properly to prevent ink leaks

 [hp.com/support/movingsmarttank](https://hp.com/support/movingsmarttank)

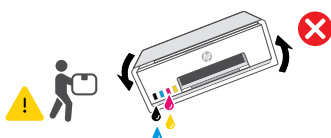
1. Turn off the printer and remove the power cord.



3. Press down on the side of the printhead cover to release the cover.

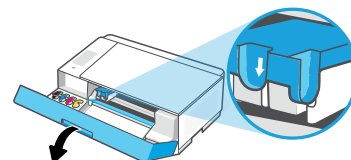


5. Pack the printer in a box (if available). While moving the printer, keep it horizontal to prevent ink leakage.

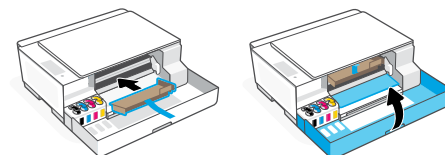


7. Connect the power cord and turn on the printer.

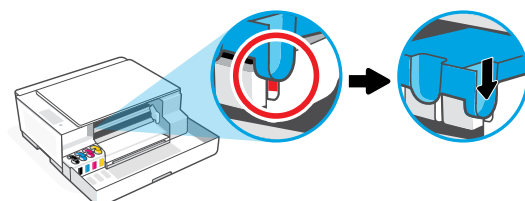
2. Open the front door. Make sure the print carriage is all the way to the left; if not, manually move it to the left.



4. Insert a cardboard restraint. Close the front door.



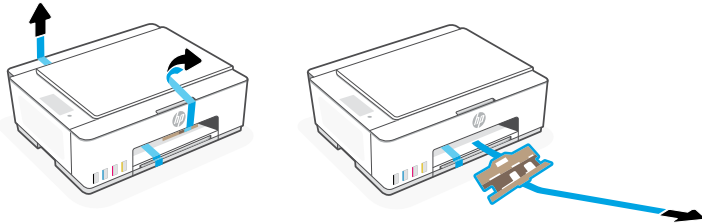
6. After unpacking, push down the blue latch to close the printhead cover. Make sure the cover is properly closed.



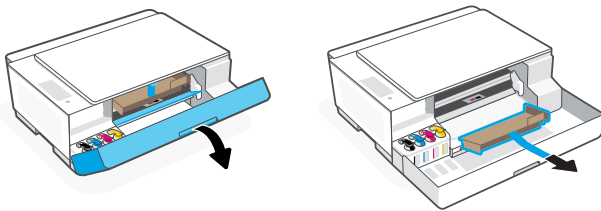
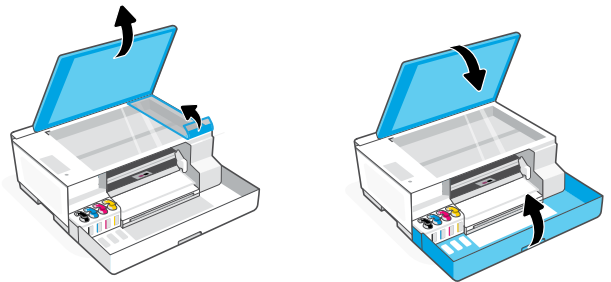
For printer troubleshooting and videos, visit [hp.com/support](https://hp.com/support)

## 1 拆开包装并开启电源

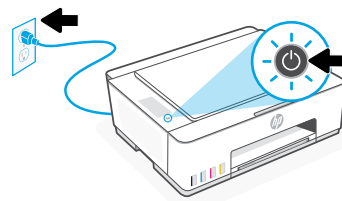
1. 取下所有胶带和包装材料。  
**注意：**妥善保留包装材料，以便将来需要移动打印机时用于重新包装。



2. 打开扫描仪盖板并取下保护膜。关闭扫描仪盖板和前盖。



3. 插入电源线，然后打开打印机。  
设置期间，保持打印机处于开启状态。

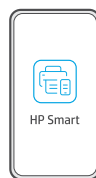


## 2 选择选项以设置打印机

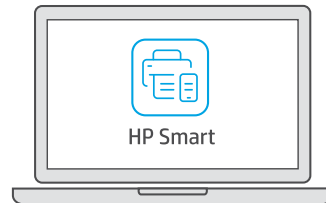
### 推荐

### 选项 1：HP Smart 引导设置

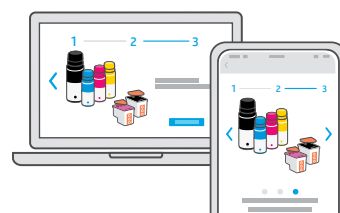
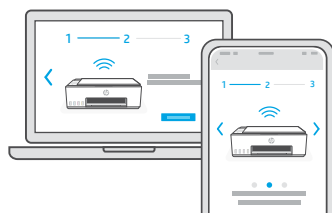
1. 使用移动设备或计算机访问 [123.hp.com](http://123.hp.com)，以安装 HP Smart 软件。



[123.hp.com](http://123.hp.com)



2. 打开 HP Smart。如果出现提示，请创建或登录 HP 帐户。
3. 在主屏幕上，选择选项以添加打印机，然后按照说明将打印机连接到网络（仅支持 2.4 GHz Wi-Fi）。
4. 在 HP Smart 中观看灌注墨槽、安装打印头、放入纸张并执行打印头校准的动画。  
HP Smart 中有各种信息，可以帮助您轻松完成设置。



### 选项 2：手动设置



按照本指南中的说明设置硬件，然后使用 HP Smart 软件来连接 Wi-Fi 并完成设置。

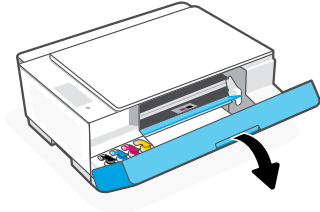


# 手动设置

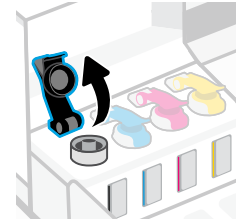
## 1 灌注墨槽



1. 打开前盖。



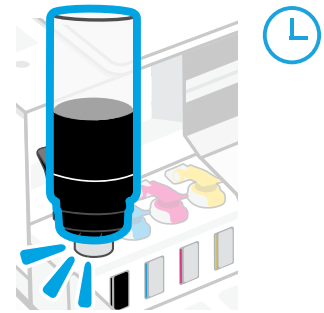
2. 打开要灌注墨槽的盖帽。



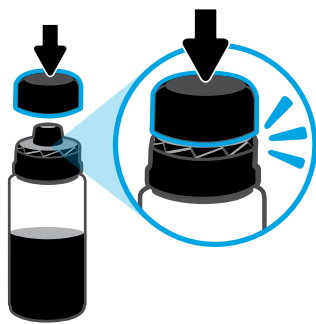
3. 拧开墨水瓶。



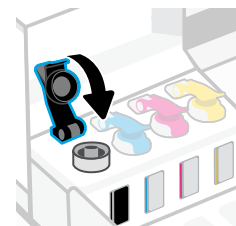
4. 将墨水瓶上下颠倒置于墨槽上，使其卡入到位。等待墨水灌满墨槽。  
**注意：**黑色墨水瓶中会有墨水剩余。



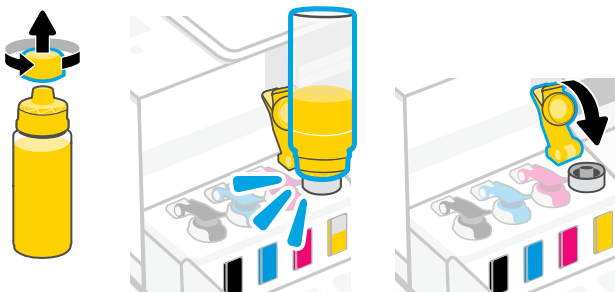
5. 关好墨水瓶，用力将盖帽装在墨水瓶上。  
**注意：**如果墨水瓶内有剩余墨水，请关好墨水瓶，然后将其直立存放在阴凉黑暗处。



6. 将槽盖帽闭合到位。

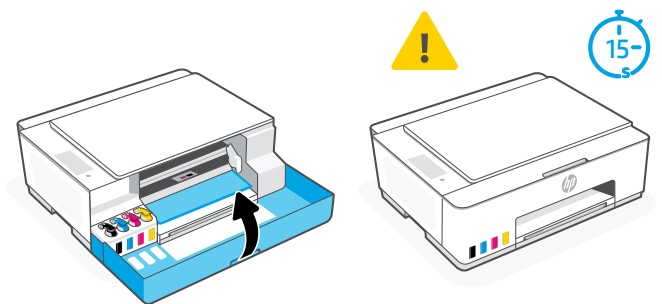


7. 重复操作，灌注所有墨槽。



8. 关闭前盖。

**⚠** 等待打印机检测墨水，需等待大约 15 秒。



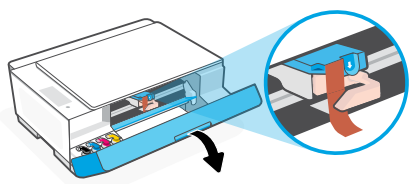
## 2 安装打印头



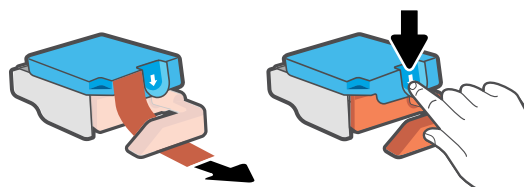
**!** 安装打印头前，请确保以下事项：

- 打印机已开启。
- 灌注墨槽后，您已关闭前盖大约 15 秒。
- 已灌注好所有四个墨槽。

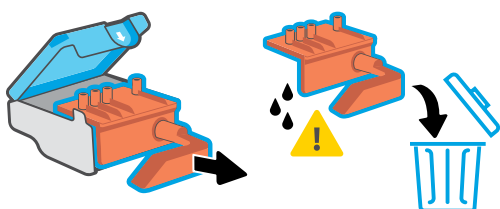
1. 打开前盖。确保墨盒托架已移动到中间位置；如果没有，请关闭前盖 15 秒。



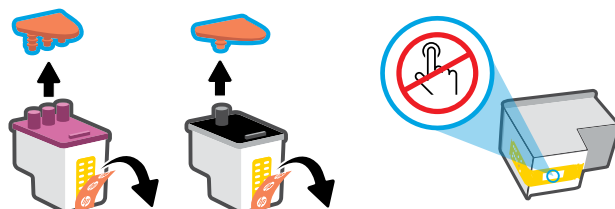
2. 取下打印头盖上的橙色胶带。按下并松开蓝色卡销，打开打印头盖。



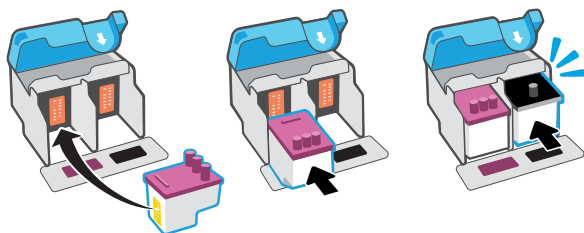
3. 取出橙色防护件并将其丢弃。  
**注意：** 确保防护件直立；请小心操作，避免漏墨。



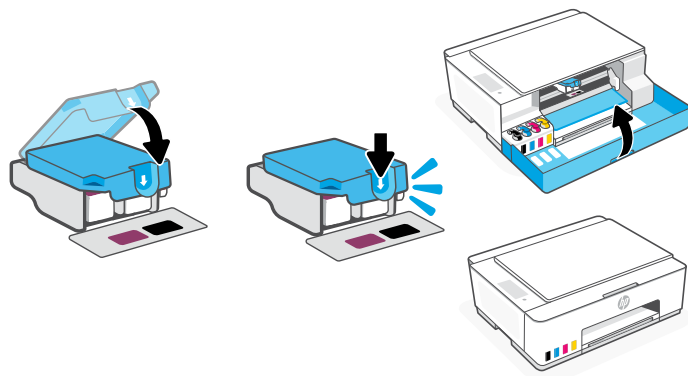
4. 取下两个打印头上的橙色盖帽和胶带。  
**小心：** 请不要触碰胶带下的电子触点和打印喷嘴。



5. 插入打印头并将其卡入到位。重复操作，安装其他打印头。  
**注意：** 确保电气触点朝内。

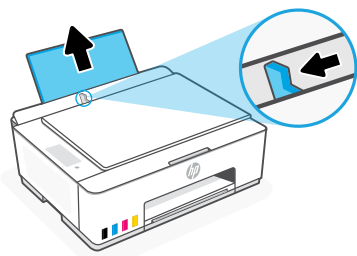


6. 关闭打印头盖和前盖。  
**注意：** 确保打印头盖正确关闭。

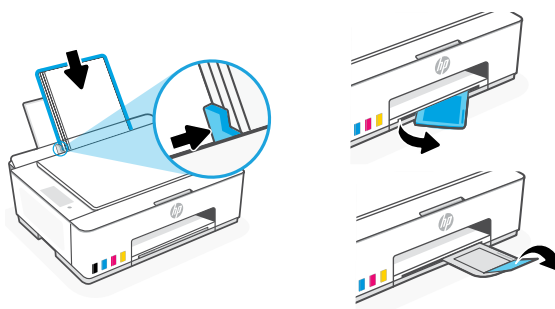


## 3 放入纸张

1. 拉出纸盒，滑出纸张导轨。



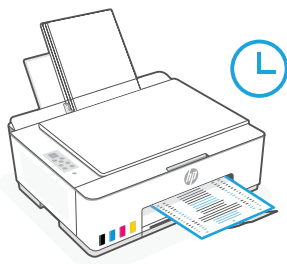
2. 放入全新未使用的 Letter 或 A4 纸张，然后调整纸张导轨。拉出纸盒延长板。






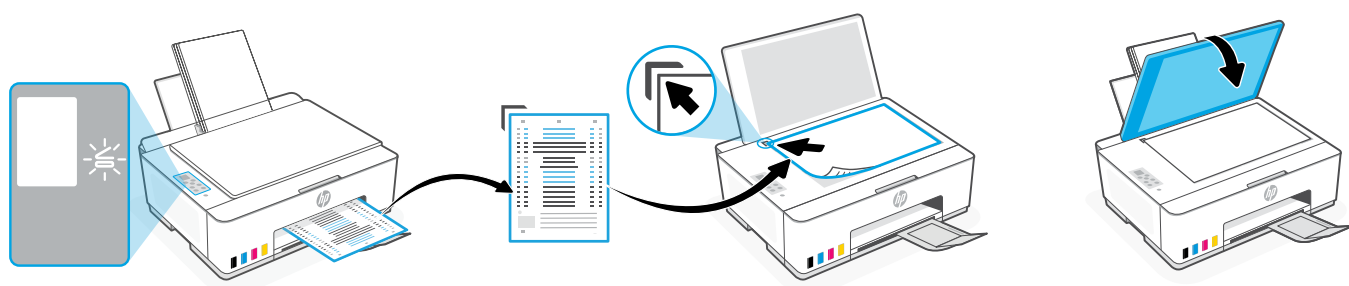
## 4 扫描打印头校准页

1. 放入纸张后，等待打印校准页。

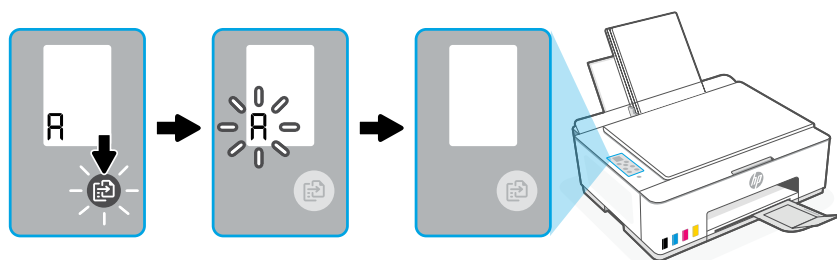


2. 开盖指示灯  闪烁时，打开扫描仪盖板并将已打印页面朝下放在扫描仪玻璃板上，与所示的角对齐。合上扫描仪盖板。

**注意：**请务必扫描打印机打印的校准页。



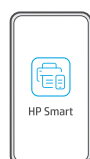
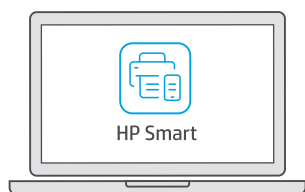
3. 按下闪烁的“复印”按钮以扫描页面。  
在打印机显示屏上，扫描期间“A”图标会闪烁，校准完成后会消失。



打印头校准完成后，打印机硬件设置完成。

## 5 安装 HP Smart 软件

1. 确保打印机控制面板上的 Wi-Fi 指示灯  闪烁。如果没有，请查看本指南的 Wi-Fi 及连接帮助与提示部分。
2. 在计算机或移动设备上访问 [123.hp.com](https://123.hp.com)，安装 HP Smart 软件。



[123.hp.com](https://123.hp.com)

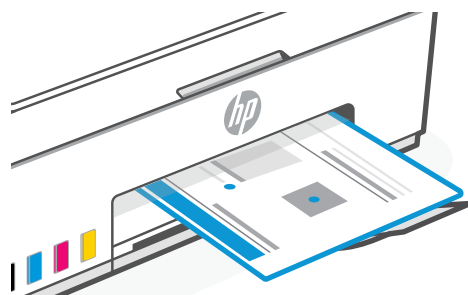
3. 打开 HP Smart。如果出现提示，请创建或登录 HP 帐户。
4. 在主屏幕上，选择选项以添加打印机，然后按照说明将打印机连接到网络（仅支持 2.4 GHz Wi-Fi）。



## 6 设置微信打印（可选）

**注意：** 微信仅在部分国家/地区可用。

当完成以上安装步骤并将打印机成功连接至无线网络后，打印机将自动打印 出一张带有二维码的信息页。

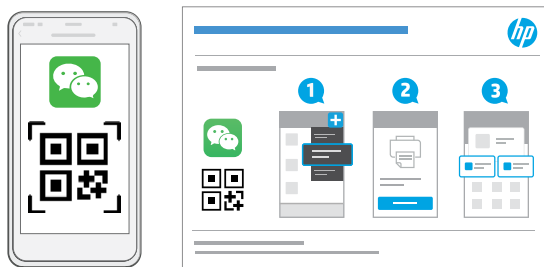


如果您没有获得信息页，请访问此网址或扫描此二维码并根据教程重新打印信息页。

<https://iot.eprintsw.com/www/faq.html>



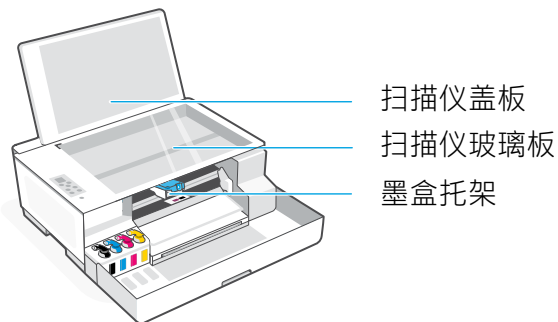
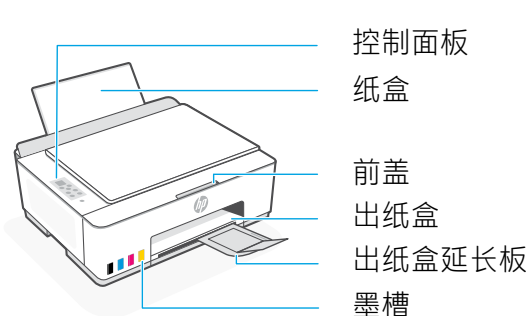
使用微信扫描信息页上的二维码以启用“惠普云打印”微信小程序，并根据页面提示完成打印机的绑定。



获取有关设置的帮助  
在线查找设置信息和视频。  
[hp.com/support/printer-setup](http://hp.com/support/printer-setup)



# 打印机参考

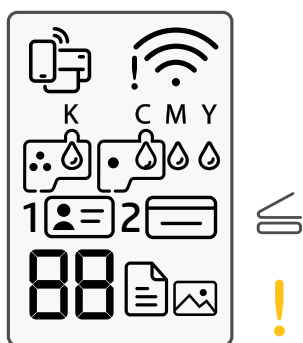


## 控制面板按钮和指示灯



- 电源按钮**: 开启或关闭打印机。
- 开盖指示灯**: 打开扫描仪盖板以复制或扫描。
- 警示灯**: 指示纸张、墨水或打印头相关问题。
- 彩色复印按钮**: 开始彩色复印。
- 黑白复印按钮**: 开始黑白复印。  
**注意**: 要复印多份, 请多次按下按钮或按住按钮。
- 身份证复印按钮**: 将身份证放在扫描仪玻璃板上的任意位置, 将两面复印到同一页上。
- Wi-Fi 按钮/指示灯**: 打开或关闭 Wi-Fi。指示灯用于指示 Wi-Fi 状态。
- 信息按钮**: 打印打印机设置和状态摘要。
- 恢复按钮**: 继续之前中断的作业。
- 取消按钮**: 取消当前作业。

## 控制面板显示屏



- Wi-Fi Direct 状态。
- Wi-Fi 状态和信号强度。
- K C M Y**  
墨水相关问题, 其中包括墨水不足。
- 纸张尺寸/长度不匹配。  
**E1/E2**
- 墨盒托架卡住或打印头盖未关闭。  
**E3**
- 卡纸。  
**E4**
- 缺墨。  
**E7**
- 照片复印模式, 用于使用照片纸进行复印。  
**1**   
将身份证的正面放在扫描仪玻璃板上。  
**2**   
将身份证的背面放在扫描仪玻璃板上。
- 介质相关问题, 其中包括缺纸。
- 打印头相关问题。  
**注意**: 请勿打开打印头盖, 遵从指示的情况除外。

有关指示灯和错误的详细信息, 请访问 [hp.com/support](http://hp.com/support)

## Wi-Fi 及连接帮助与提示

如果软件在设置过程中未能找到打印机，请检查以下情况以解决问题。

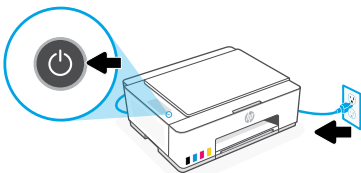
**注意：**此打印机仅支持 2.4 GHz Wi-Fi 连接。

潜在问题	解决方案
打印机 Wi-Fi 设置模式超时 	如果 Wi-Fi 指示灯熄灭，则打印机可能未处于 Wi-Fi 设置模式。重新启动 Wi-Fi 设置模式： 1. 按住 ⓘ 5 秒，直至控制面板按钮亮起。 2. 按住 📶 和 ❌ 5 秒，直至 Wi-Fi 指示灯闪烁蓝色。 3. 等待 1 分钟。关闭并重新打开 HP Smart，然后尝试重新连接。
计算机或移动设备离打印机过远	将计算机或移动设备靠近打印机。设备可能已超出打印机的 Wi-Fi 信号范围。
计算机已连接到虚拟专用网络 (VPN) 或远程工作网络	请先断开 VPN，然后再安装 HP Smart 软件。与 VPN 连接时，无法通过 Microsoft Store 安装应用。完成打印机设置后再连接 VPN。 <b>注意：</b> 在断开 VPN 连接之前，请考虑您的位置和 Wi-Fi 网络的安全性。
计算机或移动设备上的蓝牙已关闭 移动设备上的定位功能已关闭	开启正在使用的计算机或移动设备的蓝牙，以完成打印机设置。对于移动设备，还应开启定位服务。蓝牙和定位功能有助于软件找到您的网络和打印机。 <b>注意：</b> 我们不会确定您的位置，设置过程中，也不会将位置信息发送到 HP。

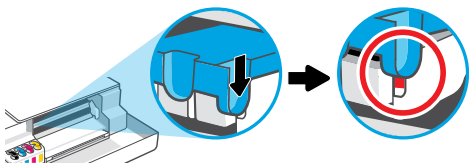
## 妥善移动打印机，以防漏墨

 [hp.com/support/movingsmarttank](https://hp.com/support/movingsmarttank)

1. 关闭打印机，断开电源线。



3. 按下打印头盖侧，松开盖子。

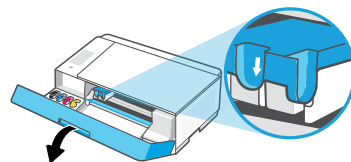


5. 将打印机打包（如适用）。  
移动打印机时，使打印机保持水平状态，防止漏墨。

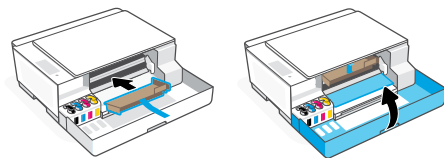


7. 连接电源线并打开打印机。

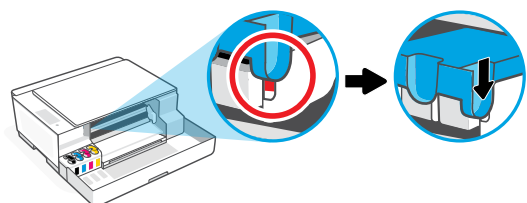
2. 打开前盖。确保墨盒托架位于最左侧；如果不是，请手动将其移动到左侧。



4. 插入固定硬纸板。关上前盖。



6. 打开包装后，按下蓝色卡销以关闭打印头盖。确保正确关闭打印头盖。



如需打印机故障排除相关信息和视频，请访问 [hp.com/support](https://hp.com/support)



---

© Copyright 2023 HP Development Company, L.P.

Microsoft is a registered trademark of Microsoft Corporation in the United States and/or other countries.  
All third party trademarks are the property of their respective owners

Printed in China  
中国印刷

EN

ZHCN



1F3Y2-90036