

**SENCOR®**

**SBL 131GR  
SBL 133OR  
SBL 134RD**



**PORTABLE FITNESS BLENDER**

Translation of the original manual



**SENCOR®**

**SBL 131GR  
SBL 133OR  
SBL 134RD**

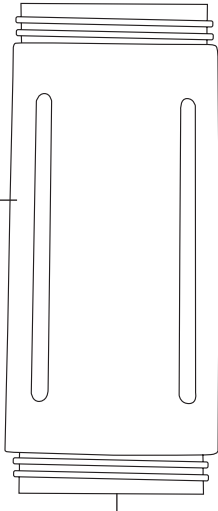


A

1



2



3

4

5

6

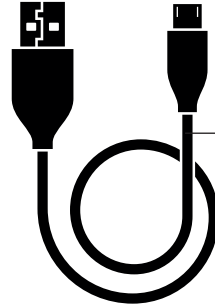
7

8

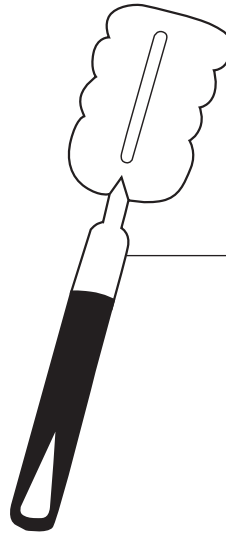
9



10

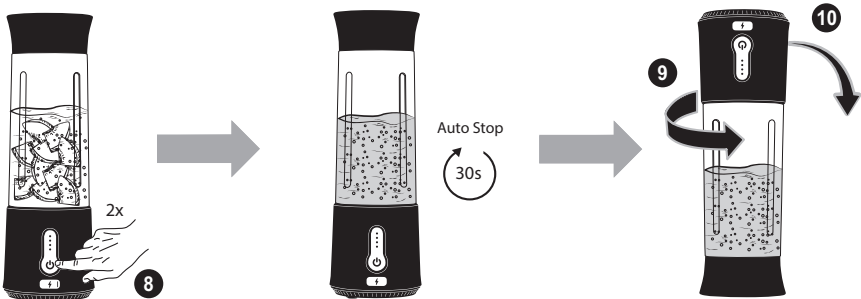
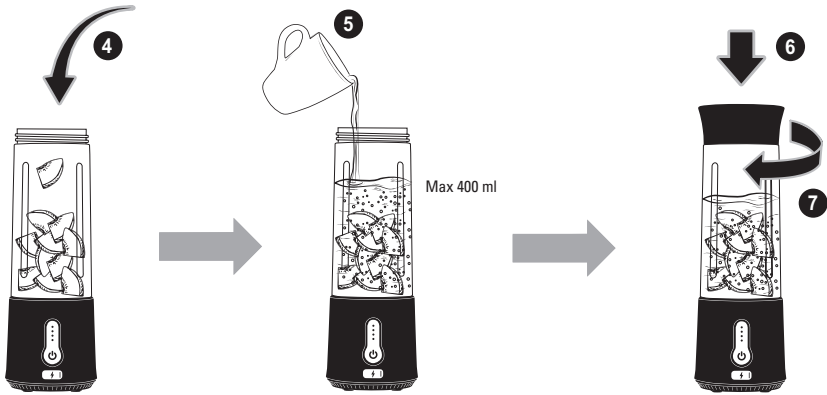
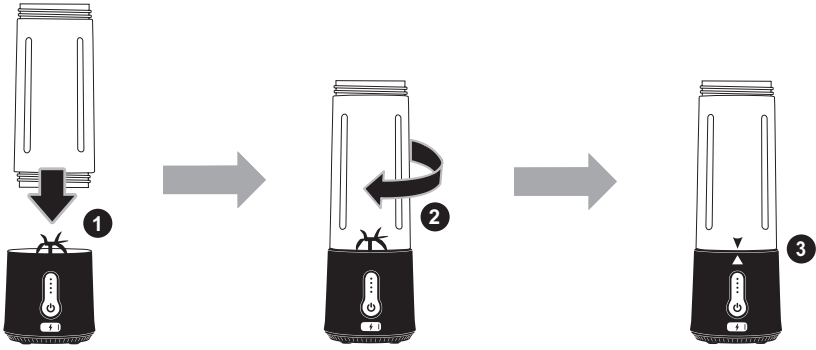


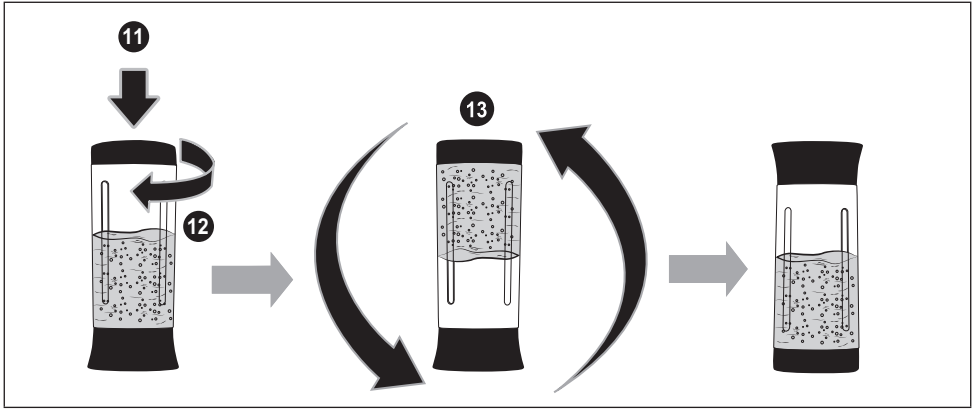
11



12

**B**





**C**

# EN Portable Fitness Blender

## Important Safety Instructions

### READ CAREFULLY AND STORE FOR FUTURE USE.

#### General Warnings

- This appliance may be used by persons with physical, sensory, mental impairments or by inexperienced persons, if they are properly supervised or have been informed about how to use of the product in a safe manner and understand the potential dangers.
- This appliance is not to be used by children. Keep the appliance out of the reach of children.
- Children must not play with the appliance.
- Cleaning and maintenance performed by the user must not be performed by unsupervised children.



#### **Warning:**

Incorrect use may lead to injuries.

- Take extra care when handling the base of the appliance to avoid injury from the chopping blade, especially when assembling the appliance, when removing the base of the blender and during cleaning.
- Clean the food contact surfaces of the appliance and its accessories according to the instructions in this manual.
- The time of food processing is described in the chapter USING THE FITNESS BLENDER.

- Always switch off the appliance when leaving it unattended and before dismantling or cleaning.
- Always disconnect the appliance from the USB power source when left unattended, after charging and before using, cleaning or moving it.
- A damaged USB charging cable must be replaced with a new cable of the same type. Do not use a damaged charging cable.

**Other important safety instructions for use of the appliance**

- Use the appliance and its accessories in accordance with the instructions in this manual.
- This appliance is designed for domestic use only. Do not use it for commercial purposes or for purposes other than those for which it is intended.
- Use, charge and store the appliance at an ambient temperature of 10 to 35 °C.
- It is forbidden to modify the surface of the appliance in any way, e.g. using self-adhesive foil, etc.
- Do not expose the appliance or its accessories to the outside, extreme temperatures, direct sunlight or an overly dusty environment.
- Always place the appliance on a clean, flat, dry and stable surface.
- The appliance may vibrate during operation. Do not place it on the edge of the table to prevent it from falling.
- Do not place the appliance or its accessories on or near an electric or gas hob. Keep it at a sufficient distance from open fire, heating elements and other sources of heat. Do not place it or any part of it into the freezer.
- Only use the appliance with original accessories from the manufacturer.



**Warning:**

The use of non-original accessories can lead to a dangerous situation.

- Do not charge the appliance when it is wet or if the base of the blender is damaged in any way.
- Before charging, the base of the blender must be completely dry. Charge the appliance with the supplied USB charging cable. The appliance must be supervised during charging. After charging, disconnect the appliance from the power source and close the USB-C port with the silicone cover. Disconnect the charging cable from the base of the blender by pulling the connector. Do not pull the charging cable.
- The blender base USB-C port is designed to connect to the USB charging cable. Do not insert objects that do not belong in it. Keep the USB charging cable dry.
- Do not charge the appliance near flammable materials or objects or at high ambient temperatures.
- Before use, always make sure that no part of the appliance is damaged.
- Before putting into operation, properly attach the upper lid to the blending container. The lid must remain closed during operation.



**Warning:**

Do not put your hands, fingers or items such as spoons, forks, etc. into the blending container while it is attached to the base of the blender.

- Do not turn on the appliance when it is empty. Improper use can adversely affect the life of the appliance.
- To avoid a dangerous situation, do not use the blender to process hard ingredients such as nutshells, hard pits of apricots, peaches, mangoes, etc.
- Take extra care when handling hot liquids and food. Hot steam or splashes of hot liquids or food can cause scalding.
- The blending container is temperature resistant up to 80°C. Never put food into it or pour liquids at higher temperatures. There is a risk of the blending container bursting and scalding. For added safety, allow hot liquids and foods to cool sufficiently before placing them in the blending container.
- Placing warm food or pouring warm liquids into the blending container causes the surface of the bowl to heat up. Take extra care when handling heated surfaces.
- Never mix hot foods or liquids. Sealing hot liquids or foods in the blending container can cause more hot steam to build up inside the container and pressurize it. When opening the container, there is a risk of splashing the hot contents of the container.
- The maximum continuous operation time of the appliance is 30 seconds. Let the appliance cool down for a few minutes before using it again.
- None of the components of this appliance are intended for use in a microwave or electric oven, etc.
- Never use the blending container as a drinking bottle while the base is attached to it. The blending container can only be used as a drinking bottle after you have removed the base from it and closed it with the bottom lid.

- Never submerge the base of the blender in water or wash it in the dishwasher to prevent it from being damaged. Other components of the appliance are also not intended for washing in a dishwasher.
- Do not disinfect any part of the appliance in a microwave oven or with hot water above 80 °C.
- Do not use the appliance if it is not working properly, if the base of the blender has been immersed in water or shows any signs of damage. Take it to an authorised service centre for inspection or repair.
- Do not attempt to disassemble or modify the blender base in any way. This could cause the batteries to overheat or release hazardous substances.
- Do not repair the appliance yourself. Have all repairs or adjustments performed at an authorised service centre. Tampering with the appliance during the warranty period may void the warranty.
- Store the appliance in a dry and clean environment out of the reach of children and animals.



# EN Portable Fitness Blender

## User's Manual

- Thank you for purchasing our SENCOR product; we hope you will be satisfied with it.
- Before using this appliance, please familiarise yourself with the user's manual, even if you are already familiar with using similar types of appliances. Use the appliance only as described in this user's manual. Keep the manual for future reference.
- It is recommended to keep the original shipping carton, packing material, receipt and confirmation of the extent of the seller's liability or warranty certificate at least for the duration of the legal right of defective performance or quality guarantee. When transporting the appliance, we recommend packaging it again in the original box provided by the manufacturer.

### DESCRIPTION OF THE APPLIANCE AND ITS ACCESSORIES (Fig. A)

- |  |   |
|--|---|
| <b>A1</b> Top cap with sealing   | <b>A7</b> On/off button                                   |
| <b>A2</b> Blending container with measuring cup 500 ml / drinking bottle                                     | <b>A8</b> USB-C port with silicone cover                  |
| <b>A3</b> Magnet   | <b>A9</b> Anti-slip feet                                  |
| <b>A4</b> Blades unit with 6 chopping blades   | <b>A10</b> Bottom cap with sealing                        |
| <b>A5</b> Wireless base for blender  | <b>A11</b> Charging cable with USB-A and USB-C connectors |
| <b>A6</b> LED indicators indicate the operation of the blender, battery charge status and possible problems. | <b>A12</b> Cleaning brush                                 |

### THE PURPOSE OF USING THE APPLIANCE

- With a portable fitness blender, you can easily and quickly prepare smoothies or protein drinks, milkshakes and baby blended fruit or vegetable snacks wherever and whenever you need them.

### CHARGING THE BATTERIES

- The blender is equipped with 2 built-in Li-Ion batteries (7.4 V $\approx$ , 2x 2,000 mAh), which enable its wireless operation.
- Before charging, the blender must be completely dry.
- Use the USB charging cable **A11** and USB power supply to charge the built-in batteries.



#### Note:

USB power supply not supplied with the appliance. Use a USB charging adapter with a 5 V $\approx$  output voltage, which you normally use to charge your mobile phone, tablet, etc., or power bank.

- To avoid a dangerous situation, only use a USB power supply that meets all the safety and technical requirements set by the legislation that applies to it. When using a USB charging adapter or power bank, follow the manufacturer's instructions for use.
- Connect the USB charging cable **A11** to a power supply with an output voltage of 5 V $\approx$ . If you used a USB charging adapter, plug it into a power outlet.
- Remove the silicone cap from the USB-C port **A8** and connect the USB charging cable **A11** to the USB-C port **A8** to start charging the batteries.
- Charging the batteries is indicated by the LED indicators **A6**. Depending on the battery charge level, the corresponding number of LED indicators **A6** flashes blue, see the chapter BATTERY CHARGE LEVEL INDICATION. Charge the batteries for 3 to 5 hours before first use.

- A full charge of the batteries is indicated by the flashing of all LED indicators **A6**. After charging, disconnect the charging cable **A11** from the base of the blender **A5** and close the USB-C port **A8** with a silicone cap. Do not leave the blender **A5** base connected to the USB power supply longer than is necessary to fully charge the batteries.



#### Note:

If you used a USB charging adapter for power, be sure to unplug it from the power outlet.

- The batteries can withstand up to 20 blending cycles per single full charge.
- To keep the life of the Li-Ion batteries as long as possible, use, store and charge the blender at room temperature. Do not fully discharge the batteries. It is better to recharge the batteries before they are completely discharged. If you do not use the blender for a long time, keep the batteries charged to about half their capacity.

### BATTERY CHARGE LEVEL INDICATION

Battery charge level	Number of LED indicators <b>A6</b> flashing / illuminated in blue
75–100 %	4
50–74 %	3
25–49 %	2
1–24 %	1

- In charging mode, the corresponding number of LED indicators **A6** flashes blue depending on the battery charge level.
- In idle mode, verify the state of charge of the batteries by pressing button **A7** once. Depending on the battery charge level, the corresponding number of LED indicators **A6** will light in blue. If the batteries are discharged, the LED indicators **A6** do not turn on at all.

### BEFORE FIRST USE

- Charge the built-in batteries according to the instructions in chapter CHARGING THE BATTERIES.
- Seal the **A8** USB-C port with a silicone cover to prevent water or moisture from entering.
- Wash the blending container **A2**, the upper and lower lids **A1** and **A10**, the blades unit **A4** and the space around it that comes into contact with food thoroughly with warm water using a small amount of dishwashing detergent. Then rinse everything under running water, wipe dry with a kitchen towel or allow to dry freely.



#### Warning:

When cleaning the base **A5**, take extra care not to cut yourself on the blade of the blade unit **A4**. Do not touch the chopping blades. Do not immerse the blender base **A5** in water. The blender and its accessories are not dishwasher safe.

### FOOD PREPARATION

- Cut the food into same-sized pieces of approx. 2.5 cm.
- The size of frozen food (ice cubes, strawberries, mangoes etc.) should also not exceed 2.5 cm.
- Remove hard kernels, e.g. from apricots, peaches, mangoes, etc., or hard seeds.

- For selected fruits and vegetables, remove inedible peels. Remove the central part of the pineapple in addition to the peel. Otherwise, the blender may be damaged. Process only the flesh and water from the coconut.

## STORAGE

- Clean the blender and its accessories according to the instructions in the chapter CLEANING AND MAINTENANCE. Before storing, the blender and its accessories must be clean and dry.
- Store the blender and its accessories in a clean, dry place out of the reach of children and pets.

## USING THE FITNESS BLENDER (Fig. B)

- Make sure the blender is charged before use. Attach the blending container **A2** to the base of the blender **A5**. Tighten the container **A2** properly to align the magnet **A3** with the button **A7**.
- Place the blender on a flat and stable surface. Fill the blending container **A2** with prepared food up to about 60% of its capacity, i.e. 300 ml.
- Add a sufficient amount of liquids (e.g. water, milk, etc.) to approximately 80% of the capacity of the blending container **A2**, i.e. 400 ml.
- Close the blending container **A2** with the upper lid **A1** and tighten it properly. Tilt the blender several times from side to side to release food that could be stuck under the blades unit **A4**.
- Press the button **A7** twice to start the blender. All LED indicators **A6** will flash blue from bottom to top. During operation, it is recommended to hold the blender with one hand from above.



### Note:

The safety lock will not allow the blender to start if the blending container **A2** is not properly attached to the base of the blender **A5**.

- After 30 seconds, the blender stops automatically. All LED indicators **A6** flash 5 times in magenta. If you want to end the operation of the blender sooner, press button **A7** once.
- Turn the top lid **A1** downwards. Hold the blending container **A2** with one hand and carefully unscrew the base **A5** with the other. Set the base **A5** aside (do not place it on its side or on the blade unit) and close the container **A2** with the lower cap **A10** properly to prevent the contents of container **A2** from leaking out. Turn container **A2** down with the lower lid **A10**. Now you can use the container **A2** as a drinking bottle.
- After each use, clean the parts that came into contact with food properly.

## CLEANING AND MAINTENANCE (Fig. C)

- Seal the **A8** USB-C port with a silicone cover to prevent water or moisture from entering.
- Wash the blending container **A2**, the upper and lower lids **A1** and **A10**, the blades unit **A4** and the space around it that comes into contact with food thoroughly with warm water using a small amount of dishwashing detergent. Use the included brush **A12** to remove any food residue. Finally, rinse the individual parts under flowing water and wipe them dry with a kitchen towel or allow them to dry freely.



### Warning:

When cleaning the base **A5**, take extra care not to cut yourself on the blade of the blade unit **A4**. Do not touch the chopping blades.

The blender and its accessories are not dishwasher safe.

- The blender can also be cleaned by putting it into operation according to the instructions in the chapter of USING THE FITNESS BLENDER with the container **A2** half filled with clean water with a drop of hand dishwashing detergent. This will release most of the food remains. At the end of the blending cycle, unscrew the upper lid **A1** and empty the contents of the container **A2**. Carefully unscrew and remove the blending container **A2** from the base **A5**. Then rinse the individual components that come into contact with food under running water and allow them to dry freely.
- Never use scouring pads or abrasive cleaners for cleaning to avoid scratching or damaging the surface of the blender.

## TROUBLESHOOTING

Problem	Possible cause	Solution
The blender cannot be turned on. All LED indicators <b>A6</b> will be red or will not be lit at all.	The batteries are flat.	Charge the batteries. Follow the instructions in the section CHARGING THE BATTERIES.
The blender cannot be turned on. All the LED indicators <b>A6</b> will flash magenta.	Container <b>A2</b> is not properly attached to base <b>A5</b> .	Tighten the container <b>A2</b> so that the magnet <b>A3</b> is aligned with the button <b>A7</b> . The location of the magnet <b>A3</b> is indicated by an arrow in the bottom part of the container <b>A2</b> .
During operation, all LED indicators <b>A6</b> are flashing red.	Low battery charge.	Charge the batteries. Follow the instructions in the section CHARGING THE BATTERIES.
The blender has stopped after 5 seconds of operation.	The blender is empty.	Place the ingredients in the container <b>A2</b> . Proceed according to the chapter USING THE FITNESS BLENDER.
The blender has stopped. All LED indicators <b>A6</b> are flashing red at a fast interval of approx. 5 seconds.	Processed foods are stuck under the blade unit <b>A4</b> or are too dense. There's been an overload.	Tilt the blender several times from side to side to release jammed food. Add liquids or use ingredients cut into smaller pieces.
Frozen foods or ice cubes cannot be processed into the required consistency.	There is little or no fluid in container <b>A2</b> .	Add liquids to the blending container <b>A2</b> . Frozen foods and ice cubes should be processed with a sufficient amount of liquids. Proceed according to the chapter USING THE FITNESS BLENDER.
The contents of the bottle <b>A2</b> are leaking.	The sealing ring is not properly located in its location.	Place the sealing ring in its place.

## TECHNICAL SPECIFICATIONS

Batteries .....	Li-Ion, 7,4 V $\overleftrightarrow{=}$ , 2x 2,000 mAh
Charging voltage/current.....	5 V $\overleftrightarrow{=}$ , 1 A
Protection level .....	IP65
Noise level .....	82 dB(A)
Operating cycle .....	30 s



This product complies with all the essential requirements of the applicable EU directives.

The declared noise emission level of the appliance is 82 dB(A), which represents a level A of acoustic power with respect to a reference acoustic power of 1 pW.

## Glossary of technical terms

### Protection level IP65

- The first digit indicates the degree of protection against the ingress of solid foreign bodies. The digit 6 means that the device is dust-tight.
- The second digit indicates the degree of protection against water ingress. The digit 5 means that the device is protected against low-pressure water jets.

Changes to text and technical parameters are reserved.

## INSTRUCTIONS AND INFORMATION ON DISPOSAL OF USED PACKAGING MATERIAL

Dispose of used packaging material in the designated waste disposal area determined by the municipality

## DISPOSAL OF USED BATTERIES

Ensure that the built-in batteries are removed from the product before taking it to the designated collection point.

Removal of the batteries is ensured by an authorised service centre.

Never attempt to remove the batteries yourself. If the product has been disassembled once due to its ecological disposal, it must not be reassembled, charged or used.



This symbol means that used accumulators and batteries do not belong in normal municipal waste. Take used accumulators and batteries to designated collection points for proper disposal. Proper disposal of accumulators and batteries will help prevent negative impacts on the environment and human health.

## Disposal in Other Countries Outside the European Union

This symbol is valid in the European Union. If you want to dispose of used batteries and accumulators, ask your local authorities or your dealer for the necessary information on the correct disposal method.

## DISPOSING OF USED ELECTRICAL AND ELECTRONIC EQUIPMENT



This symbol on products or original documents means that used electric or electronic products must not be added to ordinary municipal waste. For proper disposal and recycling of these products, deliver them to designated collection points. Alternatively, in some European Union states or other European countries the products can be returned to the local retailer when buying an equivalent new product.

By properly disposing of this product, you help preserve valuable natural resources and contribute to preventing potential negative impacts on the environment and human health resulting from improper waste disposal. For further details, contact your local authorities or the nearest collection point.

Fines may be imposed for improper disposal of this type of waste in accordance with national regulations.

### For Business Entities in European Union States

If you want to dispose of electric or electronic devices, ask your retailer or supplier for the necessary information.

### Disposal in Other Countries Outside the European Union

This symbol is valid in the European Union. If you wish to dispose of this product, request the necessary information about the correct disposal method from the local council or from your retailer.