

SENCOR®

SBL 150WH
SBL 151BK



PORTABLE VACUUM FITNESS BLENDER
Translation of the original manual

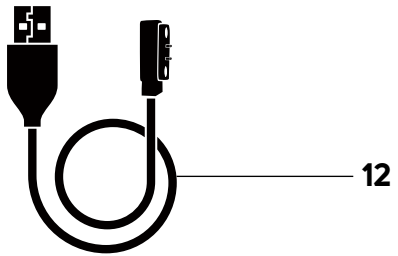
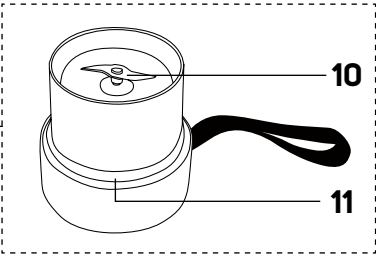
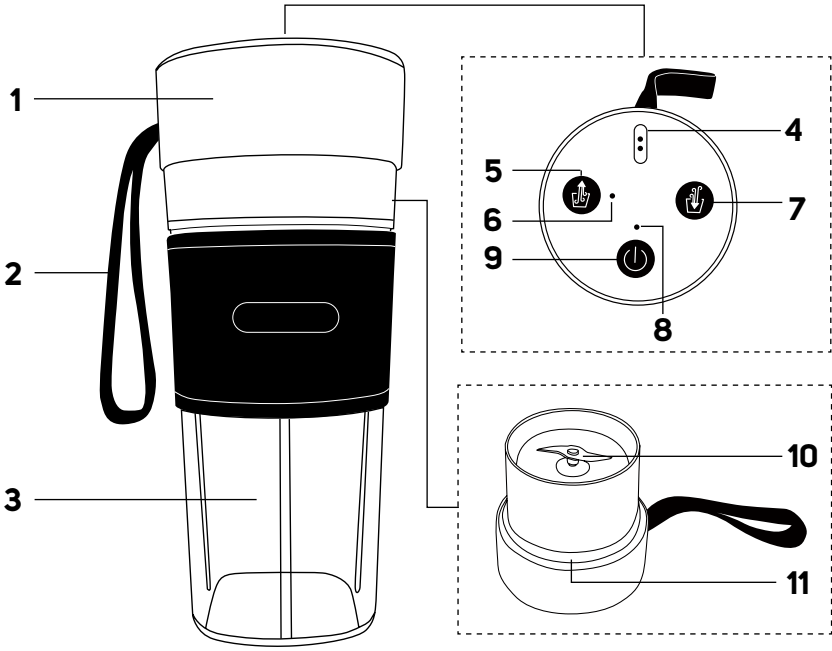


SENCOR®

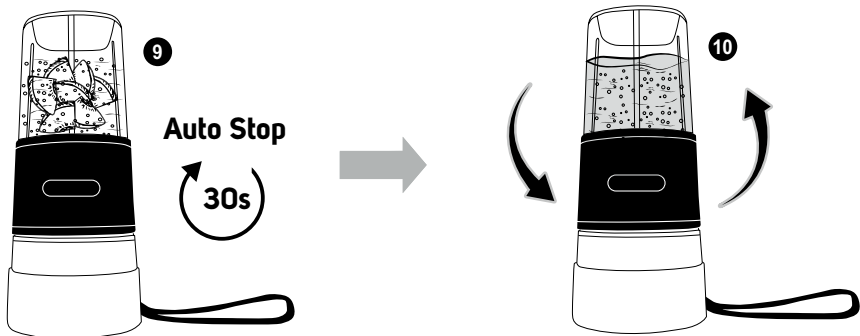
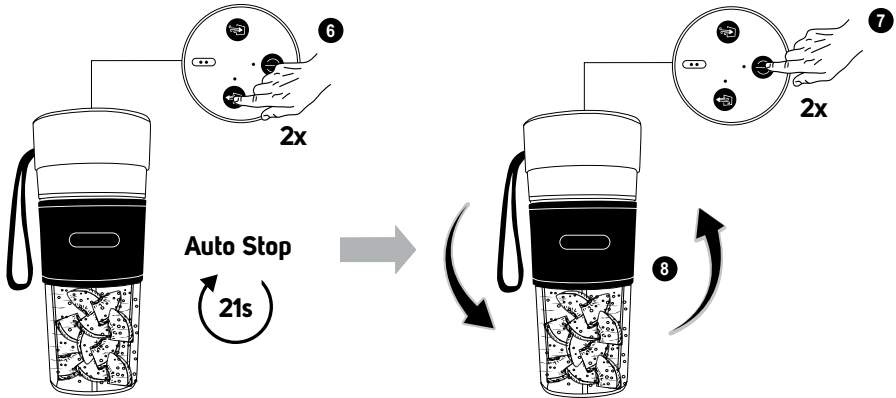
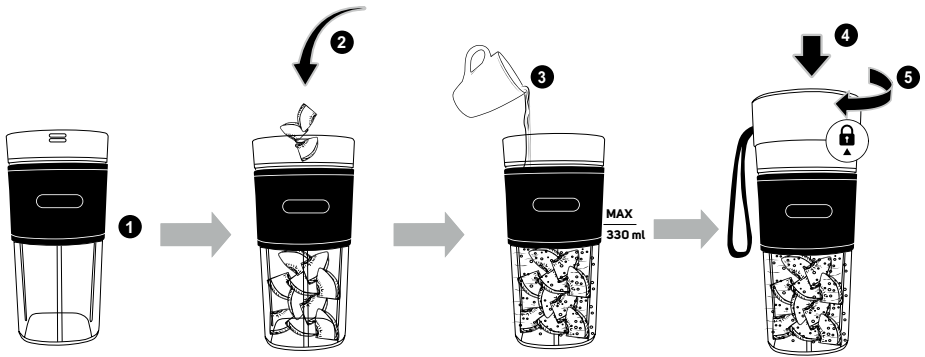
**SBL 150WH
SBL 151BK**

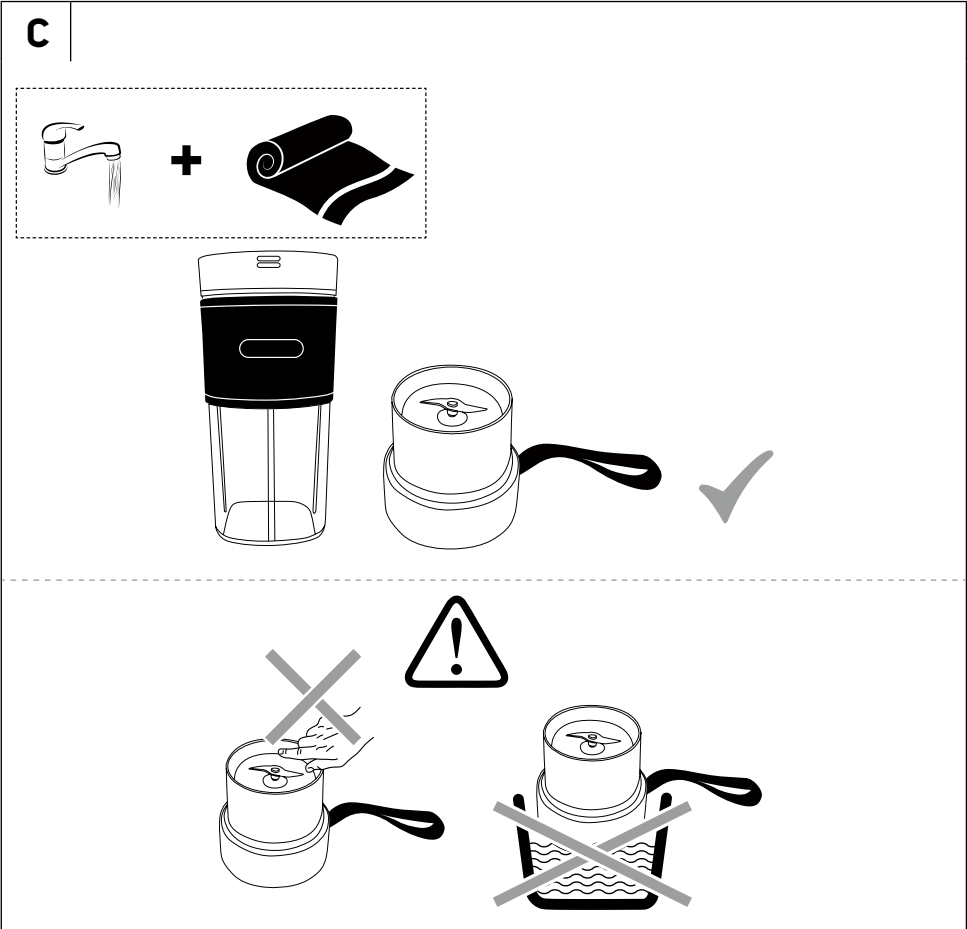
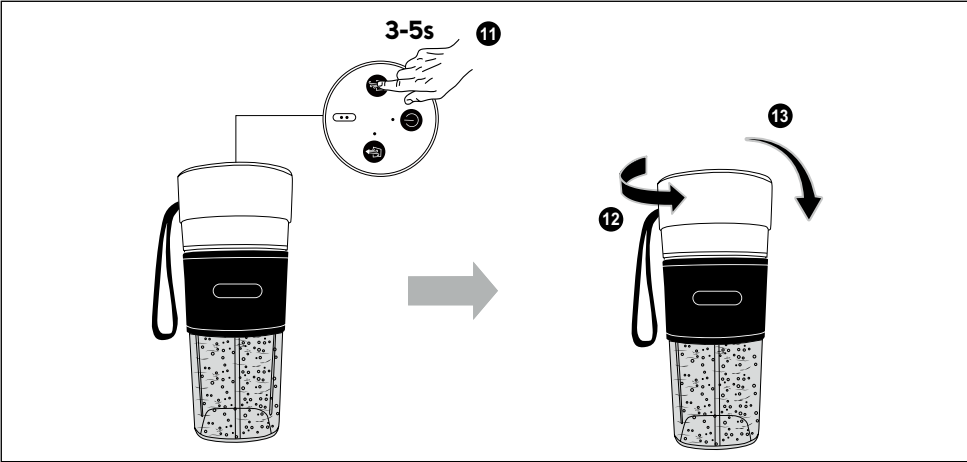


A



B





EN Portable Vacuum Fitness Blender

Important Safety Instructions

READ CAREFULLY AND STORE FOR FUTURE USE.

General Warnings

- This appliance may be used by persons with physical, sensory or mental impairments or by inexperienced persons, if they are properly supervised or have been informed about how to use of the product in a safe manner and understand the potential dangers.
- This appliance is not to be used by children. Keep the appliance out of the reach of children.
- Children must not play with the device.
- Cleaning and maintenance performed by the user must not be performed by unsupervised children.



Warning:

Incorrect use may lead to injuries.

- Take extra care when handling the appliance to avoid injury from the chopping blade, especially when assembling the appliance, when removing the lid and during cleaning.
- Clean the food contact surfaces of the appliance and its accessories according to the instructions in this manual.
- The processing time for food is given in the OPERATING THE PORTABLE VACUUM BLENDER chapter.

- Always switch off the appliance when leaving it unattended and before dismantling or cleaning.
- Always disconnect the appliance from the USB power source when left unattended, after charging and before using, cleaning or moving it.
- A damaged USB charging cable must be replaced with a new cable of the same type. It is forbidden to use a damaged charging cable.

Other important safety instructions for use of the appliance

- Use the appliance and its accessories in accordance with the instructions in this manual.
- This appliance is designed for domestic use only. Do not use it for commercial purposes or for purposes other than those for which it is intended.
- Use, charge and store the appliance at an ambient temperature of 10 to 35 °C.
- It is forbidden to modify the surface of the appliance in any way, e.g. using self-adhesive foil, etc.
- Do not expose the appliance or its accessories to the outdoor environment, extreme temperatures, rapid temperature fluctuations, direct sunlight or excessive dust.
- Always place the appliance on a clean, flat, dry and stable surface.
- The appliance may vibrate during operation. Do not place it on the edge of the table to prevent it from falling.
- Do not place the appliance or its accessories on or near an electric or gas hob. Keep it at a sufficient distance from open fire, heating elements and other sources of heat. Do not place it or any part of it into the freezer.
- Only use the appliance with original accessories from the manufacturer.



Warning:

The use of non-original accessories can lead to a dangerous situation.

- Moisture or water on the charging port can cause corrosion. Always remove moisture or water as soon as possible using a clean dry wiping cloth.
- Do not charge the appliance if it is wet, if it has moisture on it or if the lid is damaged in any way. Before charging, all parts of the appliance must be completely dry.
- Charge the appliance with the supplied USB charging cable. Keep the USB charging cable dry. Before connecting the charging cable to the charging port, make sure that the charging port and the connector of the charging cable are completely clean and dry.
- The charging cable connector, which is designed to connect to the charging port, is magnetic. It may only be connected to the charging port in one direction. Do not try to connect it backwards.
- The appliance must be supervised during charging. Disconnect the charging cable from the lid of the appliance by pulling the connector. Do not pull the charging cable. Only handle the charging cable with dry and clean hands.
- Do not use the charging cable that comes with this appliance for other types of appliances.
- Do not charge the appliance near flammable materials or objects or at high ambient temperatures.
- Before use, always make sure that no part of the appliance is damaged.
- Properly attach the lid to the blender container before putting it into operation. The appliance is equipped with a safety lock that will not allow it to start unless it is properly assembled. Do not remove the lid during operation.



Warning:

When handling the lid, take extra care not to injure yourself on the chopping blades.

- Before removing the lid, make sure that the knife unit has stopped.
- Do not idle the appliance or subject it to excessive loads. Improper use can adversely affect the life of the appliance.
- To avoid a dangerous situation, do not use the blender to process hard ingredients such as nutshells, hard pits of apricots, peaches, mangoes, bones, etc.
- This appliance is not intended for preparing dough or mashed potatoes, whipping egg whites or grinding raw meat, etc.
- Do not mix ingredients such as carbonated drinks, baking soda, baking powder, yeast, etc.
- Do not fill the blender container above the maximum mark on the inside of the container.
- Take extra care when handling hot liquids and food. Hot steam or splashes of hot liquids or food can cause scalding.

- Do not put hot food or pour hot liquids into the mixing container. There is a risk of the mixing container bursting and scalding. Allow hot liquids and foods to cool down to room temperature before placing them in the blender container.
- Do not mix hot foods or liquids.
- The mixing cycle lasts 30 seconds. Let the appliance cool down for a few minutes before using it again.
- None of the components of this appliance are intended for use in a microwave or electric oven, etc.
- To avoid a dangerous situation, never submerge the lid of the blender in water or wash it in the dishwasher. The mixer container is also not intended for washing in a dishwasher.
- Do not use the appliance if it is not working properly, if the blender lid has been immersed in water or if it shows any signs of damage (cracked or broken container, damaged lid, etc.). Take it to an authorised service centre for inspection or repair.
- Do not attempt to modify or disassemble the blender lid in any way. This could cause the batteries to overheat or release hazardous substances.
- Do not repair the appliance yourself. Have all repairs or adjustments performed at an authorised service centre. Tampering with the appliance during the warranty period may void the warranty.
- Store the appliance in a dry and clean environment out of the reach of children and animals.

EN Portable Vacuum Fitness Blender

User's Manual

- Thank you for purchasing our SENCOR product; we hope it will serve to your satisfaction.
- Before using this appliance, please familiarise yourself with the user's manual, even if you are already familiar with using similar types of appliances. Use the appliance only as described in this user's manual. Keep the manual for future reference.
- It is recommended to keep the original shipping carton, packing material, receipt and confirmation of the extent of the seller's liability or warranty certificate at least for the duration of the legal right of defective performance or quality guarantee. When transporting the appliance, we recommend packaging it again in the original box provided by the manufacturer.

DESCRIPTION OF THE APPLIANCE AND ITS ACCESSORIES (Fig. A)

A1 Lid with control panel and blade unit	A7 Button for pressure equalization in the container
A2 Carry loop	A8 LED blender operation/charging indicator
A3 Container with a maximum filling capacity of 330 ml	A9 Blending mode start/stop button
A4 Charging port	A10 Blade unit
A5 Vacuum mode start/stop button	A11 Gasket ring
A6 LED indicator for vacuum mode	A12 USB charging cable

THE PURPOSE OF USING THE APPLIANCE

- With the portable vacuum blender, you can easily and quickly prepare smoothies or protein drinks, milkshakes and some types of baby blended food.

CHARGING THE BATTERIES

- The blender is equipped with built-in Li-Ion batteries, which enable its wireless operation.
- Make sure the **A4** charging port is completely clean and dry before charging.
- Use the **A12** USB charging cable to charge the built-in batteries.
- The appliance may be connected to a USB charging socket in the wall that allows power to be supplied to terminal devices using a USB charging cable type A, or to a USB charging adapter 5 V ~, 1A.



Note:

USB power supply not supplied with the appliance.

- To avoid a hazardous situation, use only a certified type of USB power supply that meets all safety and technical requirements set by the legislation that applies to it.
- Connect the **A12** USB charging cable to a USB charging socket in the wall or to a USB charging adapter, which you then plug into an electrical outlet. When using the USB charging adapter, follow the manufacturer's instructions in the user manual.
- To start charging the batteries, connect the magnetic connector of the **A12** USB charging cable to the **A4** charging port.
- Charge the batteries for approximately 2 hours before first use. During charging, the **A8** LED indicator will be red. The end of charging is indicated by the **A8** white LED indicator.
- When charging is complete, disconnect the **A12** USB charging cable from the **A4** charging port. Disconnect the other end of the **A12** USB charging cable from the USB charging socket in the wall or unplug

the USB charging adapter from the power outlet. Do not leave the blender connected to the USB power supply longer than it takes to fully charge the batteries.

- The batteries can withstand up to 10 mixing cycles per single full charge.
- To keep the life of the Li-Ion batteries as long as possible, use, store and charge the blender at room temperature. Do not fully discharge the batteries. It is better to recharge the batteries before they are completely discharged. If you do not use the blender for a long time, keep the batteries partially charged.

BEFORE FIRST USE

- Charge the built-in batteries according to the instructions in chapter CHARGING THE BATTERIES.
- Remove the blender lid **A1** from the container **A3**. Wash the underside of the **A1** lid with the **A10** blade unit, the **A11** gasket ring and the **A3** container thoroughly with warm water using a small amount of hand dishwashing detergent. Then rinse all these parts under running water to remove any detergent residue.
- Wipe the top of the **A1** lid with a damp cloth.
- After cleaning, wipe the **A1** lid and the **A3** container dry with a kitchen towel. Always wipe off any water or moisture on the **A4** charging port immediately after cleaning the blender.





Warning:

When cleaning the **A1** blender lid, take extra care not to cut yourself on the blade of the **A10** blade unit. Do not touch the chopping blades. Do not immerse the **A1** blender lid in water. **A1** lid and **A3** container are not dishwasher safe.

FOOD PREPARATION

- This blender is designed to prepare smoothies or protein beverages, milkshakes and some types of baby blended food of a more liquid consistency.
- Soft and juicy fruits such as oranges, mandarins, kiwis, blueberries, tomatoes, etc. can be processed separately in the blender. It depends on the ripeness and juiciness of the fruit. Sufficient fluids should be added to less juicy or harder fruits or vegetables. This group includes bananas, apricots, strawberries, mangoes, pineapples, apples, cucumbers, beetroot, etc. Hard vegetables such as carrots can be processed in smaller quantities in combination with softer and juicier fruits or vegetables and sufficient liquids.
- Use fresh and ripe fruit and vegetables for processing. Always wash fruit and vegetables properly.
- Remove the peel from citrus fruits and fruits with inedible or too hard skin, such as pineapple, mango, etc. Remove the central part of the pineapple in addition to the peel.
- Fruit with hard seeds or stones, such as apricots, peaches, mangoes, etc., should be stripped of their hard stones or seeds. Remove the cores and stems from fruits such as apples, pears, etc. Remove the stems and leaves from the strawberries.
- Always process only the flesh and water from the coconut.
- Cut the food into evenly sized pieces of approximately 2 cm.
- The blender is not designed to blend dry foods such as nuts, etc., or ice cubes.

OPERATING THE PORTABLE VACUUM BLENDER (Fig. B)

- Place the **A3** container on a flat and stable surface. Place the prepared foods in the **A3** container and add enough liquid to them. Do not cross the MAX mark on the inside of the **A3** container.
- Verify that the **A11** gasket ring is in its location. Close the **A3** container with the **A1** lid. Tighten **A1** lid properly to align the symbol  marked on **A1** lid with the  symbol on **A3** container.



Note:

The safety lock will not allow the blender to start if the **A1** blender lid is not properly secured to the **A3** container.

- The blender is equipped with a vacuum function. Air is extracted from the **A3** container to slow down the oxidation process, thus reducing the loss of vitamins in the food you will be processing. Press the **A5** button twice to start the vacuuming process. The **A6** LED indicator lights up. Do not tilt the blender during the vacuuming process. The blender is equipped with a function to automatically stop the vacuuming process if the blender is tilted (angle of 25° or more) to prevent the ingredients from being sucked into the pump. For the same reason, do not use the **A5** button even after the blending is finished, when the underside of the **A1** lid is contaminated with processed ingredients. The vacuuming process will stop automatically after 21 seconds.



Note:

After the air has been extracted from the **A3** container, the **A1** lid of the blender can be loosened only with difficulty or not at all because the pressure inside the **A3** container is lower than the ambient pressure. The vacuuming process can be stopped by pressing the **A5** button once.

If you do not want to use the vacuum function, leave out the above instructions.

- To start the blending mode, press the **A9** button twice. The **A8** LED indicator lights up white. Turn the blender with the **A1** lid downwards to blend the ingredients inside the **A3** container. Hold the blender with one hand during operation. Gently tilt the blender from side to side a few times to loosen any ingredients that may have become trapped under the **A10** blade unit. The blending mode will stop automatically after 30 seconds. The **A8** LED indicator flashes three times. Blending can be stopped prematurely by pressing the **A9** button.
- Turn the blender with the **A1** lid upwards. You can keep the blended ingredients in a vacuum for several hours. Do not use the blender for prolonged food storage.
- Press and hold the **A7** button for 3 to 5 seconds to equalize the pressure in the **A3** container with the ambient pressure. Do not tilt or turn the blender upside down.



Note:

If you have not used the vacuum function, leave out the above mentioned step.

- Carefully remove the **A1** lid from the **A3** container and set it aside with the control buttons facing downwards.
- Empty the **A3** container and properly clean all parts that have come into contact with food according to the instructions in the chapter CLEANING AND MAINTENANCE.

CLEANING AND MAINTENANCE (Fig. C)

- Remove the blender lid **A1** from the container **A3**. Wash the underside of the **A1** lid with the **A10** blade unit, the **A11** gasket ring and the **A3** container thoroughly with warm water using a small amount of hand dishwashing detergent. Then rinse all these parts under running water to remove any detergent residue.



Warning:


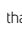

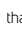
When cleaning the **A1** blender lid, take extra care not to cut yourself on the blade of the **A10** blade unit. Do not touch the chopping blades. Do not immerse the **A1** blender lid in water. **A1** lid and **A3** container are not dishwasher safe.

- You can also clean the blender by putting it into operation (without using the vacuum function) according to the instructions in the chapter of OPERATING THE PORTABLE VACUUM BLENDER with the **A3** container about half full of clean water with a drop of hand dishwashing detergent. This will release most of the food remains. When the blending cycle is complete, turn the blender with the **A1** lid upwards. Unscrew the **A1** lid and empty the contents of the **A3** container. Rinse the underside of the lid **A1** and the container **A3** under clean running water to remove any food residue and detergent.
- Make sure that no dirt remains on the **A11** gasket ring. To remove them you can use a soft toothbrush.
- Use a damp cloth to remove dirt from the top of the **A1** lid.
- After cleaning, wipe the **A1** lid and the **A3** container dry with a kitchen towel. Always wipe off any water or moisture on the **A4** charging port immediately after cleaning the blender.
- Never use metal dishwashers or abrasive cleaners for cleaning to avoid scratching or damaging the surface of the blender.

STORAGE

- Clean the blender and its accessories according to the instructions in the chapter CLEANING AND MAINTENANCE. All parts of the blender must be clean and dry before storage.
- Store the blender and its accessories in a clean, dry place out of the reach of children and pets.

TROUBLESHOOTING

Problem	Possible cause	Solution
Unable to start vacuuming process. When the A5 button is pressed twice, the A6 LED indicator flashes white three times.	The A1 lid is not properly attached to the blender container A3 .	Tighten the A1 lid so that the symbol  marked on the A1 lid is aligned with the symbol  on the A3 blender container.
	The blender is tilted (angle 25° and more).	Place the blender flat. Do not tilt it or turn it with the A1 lid down.
The blender cannot be turned on. When the A9 button is pressed twice, the A8 LED flashes white three times.	The A1 lid is not properly attached to the blender container A3 .	Tighten the A1 lid so that the symbol  marked on the A1 lid is aligned with the symbol  on the A3 blender container.
The blender cannot be turned on. When the A9 button is pressed twice, the A8 LED indicator flashes red three times.	The batteries are flat.	Recharge the batteries according to the instructions in the chapter CHARGING THE BATTERIES.

TECHNICAL SPECIFICATIONS

Batteries	Li-Ion, 7,4 V \approx , 700 mAh
Charging voltage/current.....	5 V \approx , 1 A
Protection level	IP54
Noise level.....	85 dB(A)
Operating cycle (mixing mode)	30 s



This product complies with all the essential requirements of the applicable EU directives.

The declared noise emission level of the appliance is 85 dB(A), which represents a level A of acoustic power with respect to a reference acoustic power of 1 pW.

Glossary of technical terms

Protection level IP54

- The first digit indicates the degree of protection against the ingress of solid foreign bodies. The number 5 means that the device is resistant to dust ingress.
- The second digit indicates the degree of protection against water ingress. The number 4 means that the device is protected against splashing water from all angles.

Changes to text and technical parameters are reserved.

INSTRUCTIONS AND INFORMATION ON DISPOSAL OF USED PACKAGING MATERIAL

Dispose of used packaging material in the designated waste disposal area determined by the municipality.

DISPOSAL OF USED BATTERIES

Ensure that the built-in batteries are removed from the product before taking it to the designated collection point.

Removal of the batteries is ensured by an authorised service centre.

Never attempt to remove the batteries yourself. If the product has been disassembled once due to its ecological disposal, it must not be reassembled, charged or used.



This symbol means that used accumulators and batteries do not belong in normal municipal waste. Take used accumulators and batteries to designated collection points for proper disposal. Proper disposal of accumulators and batteries will help prevent negative impacts on the environment and human health.

Disposal in Other Countries Outside the European Union

This symbol is valid in the European Union. If you want to dispose of used batteries and accumulators, ask your local authorities or your dealer for the necessary information on the correct disposal method.

DISPOSAL OF USED ELECTRICAL AND ELECTRONIC EQUIPMENT



This symbol on products or original documents means that used electric or electronic products must not be added to ordinary municipal waste. For proper disposal and recycling of these products, deliver them to designated collection points. Alternatively, in some European Union states or other European countries the products can be returned to the local retailer when buying an equivalent new product.

By properly disposing of this product, you help preserve valuable natural resources and contribute to preventing potential negative impacts on the environment and human health resulting from improper waste disposal. For further details, contact your local authorities or the nearest collection point.

Fines may be imposed for improper disposal of this type of waste in accordance with national regulations.

For Business Entities in European Union States

If you want to dispose of electric or electronic devices, ask your retailer or supplier for the necessary information.

Disposal in Other Countries Outside the European Union

This symbol is valid in the European Union. If you wish to dispose of this product, request the necessary information about the correct disposal method from the local council or from your retailer.

