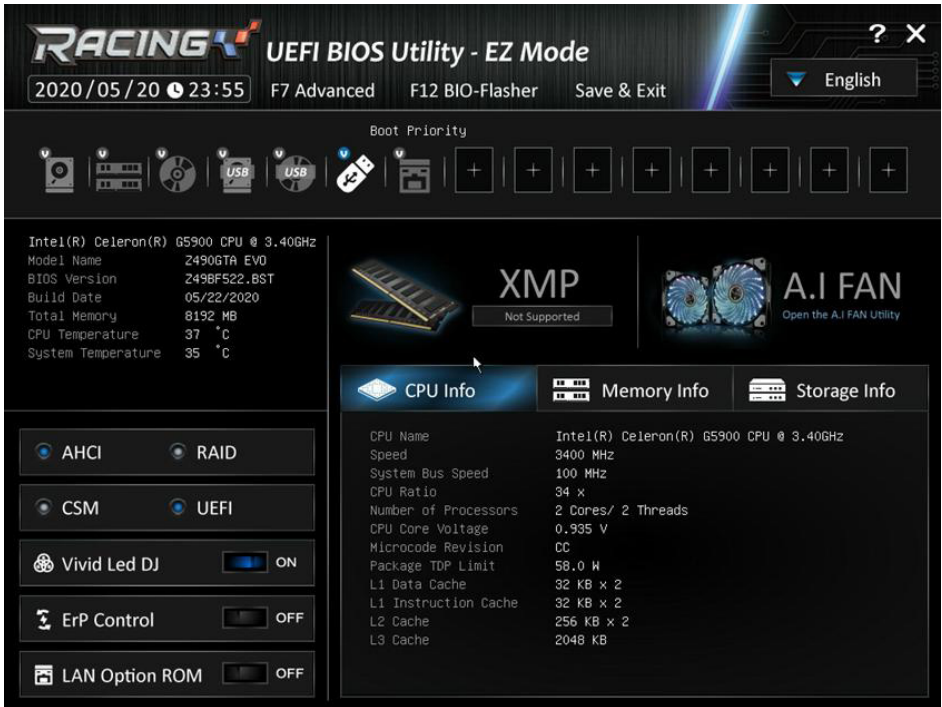




How to make RAID 0
on Intel 600 motherboard

How to make RAID 0 with M.2 PCI-E hard disk on Intel 600 motherboard?

1. Please press “Delete” when the system POST, to enter BIOS.



2. Press "F7" to go to advance model.



4. Set SATA Mode Selection to “RAID”

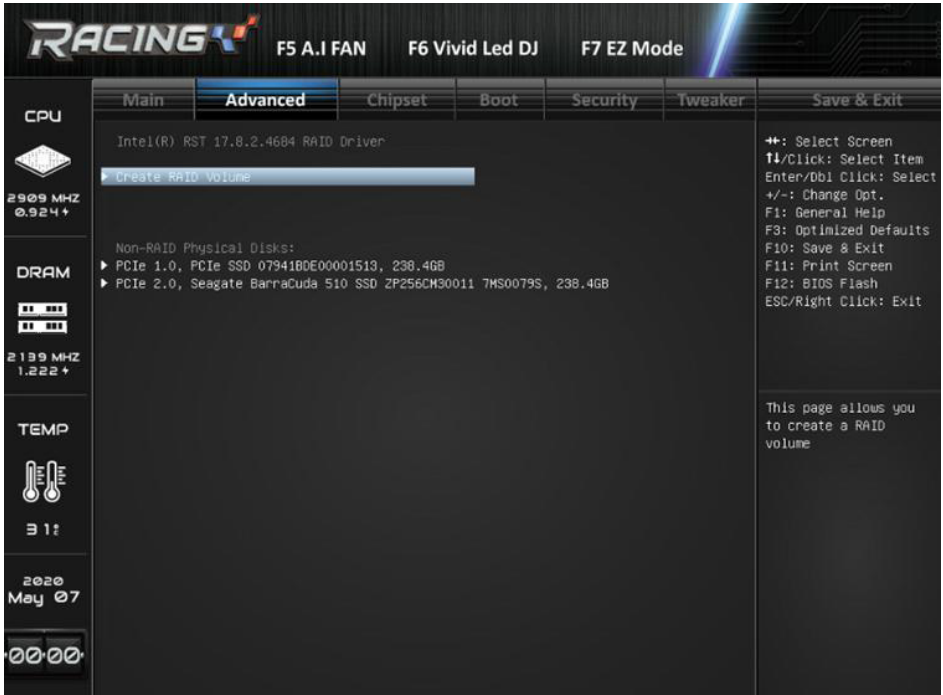


5. Press “F10” to Save & Exit

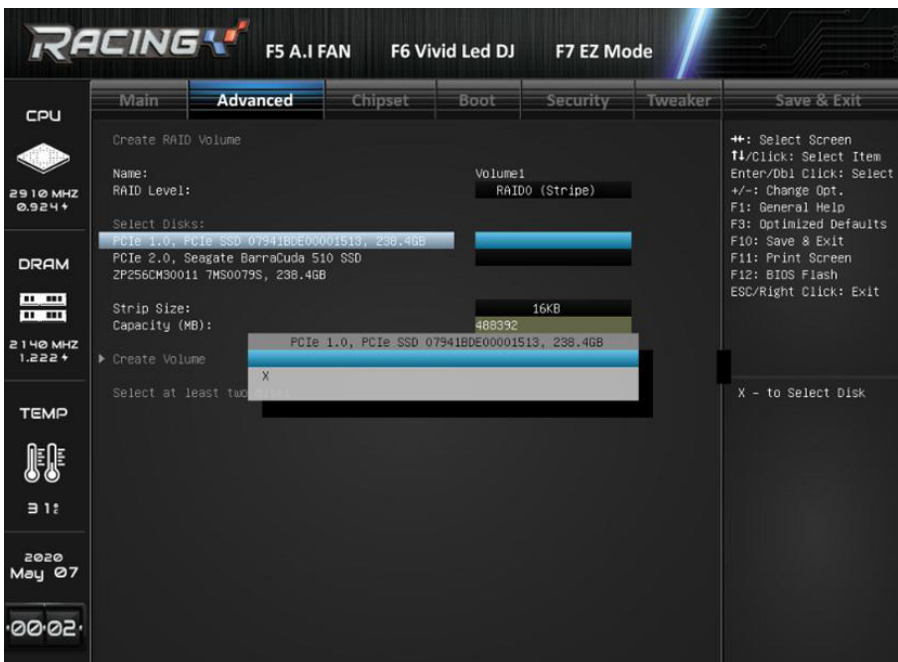
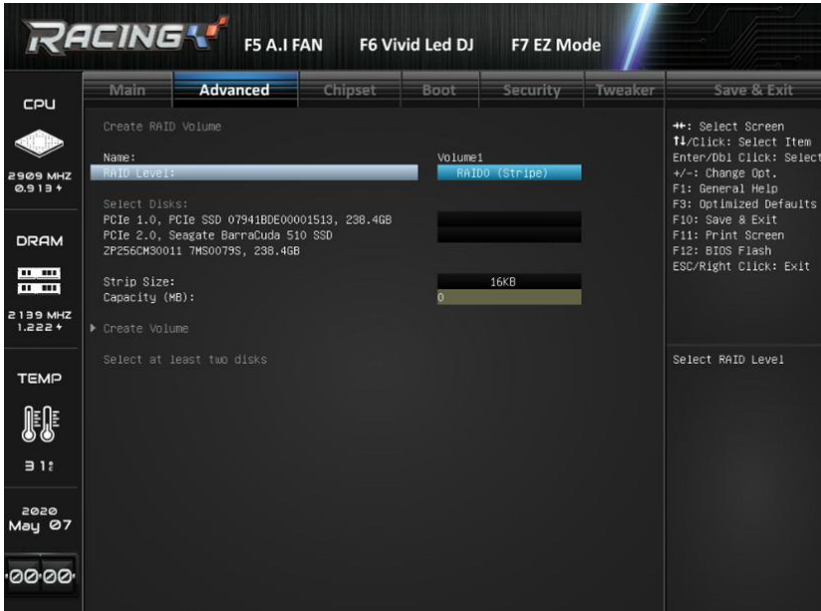
6. When the system boot on, go under BIOS-> Advanced -> Intel(R) Rapid Storage Technology.



7. Go to Create RAID Volume.



8. Set the RAID Level to “RAID0 (Stripe)” and change both of the Disk options to “X”.



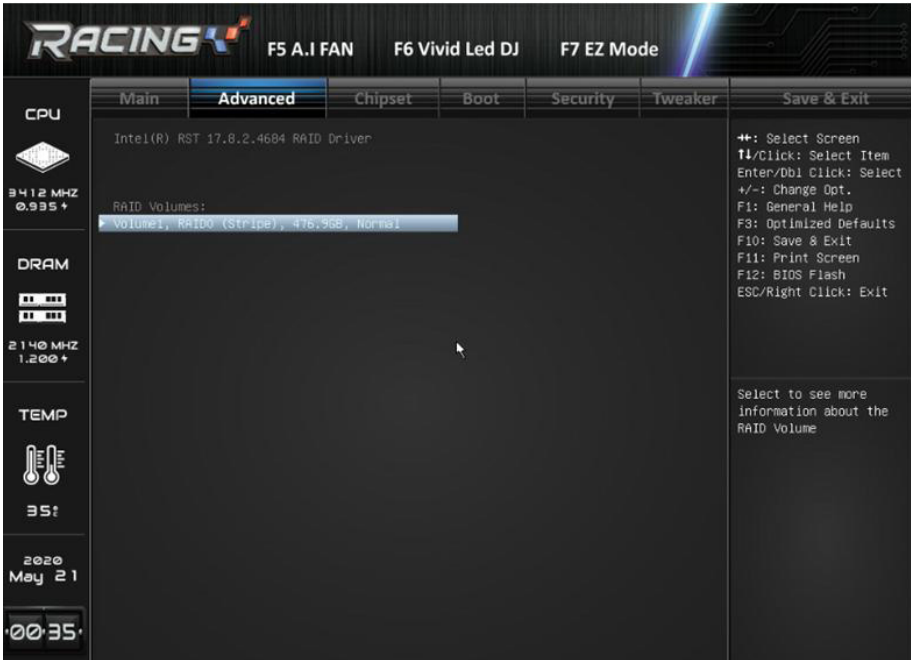
9. Select Create Volume.

The image shows the BIOS Advanced menu for creating a RAID volume. The interface is dark-themed with a 'RACING' logo at the top left. The top navigation bar includes 'F5 A.I FAN', 'F6 Vivid Led DJ', and 'F7 EZ Mode'. The 'Advanced' tab is selected, showing options for 'Main', 'Chipset', 'Boot', 'Security', 'Tweaker', and 'Save & Exit'. On the left sidebar, system status is displayed: CPU at 2909 MHz (0.924), DRAM at 2139 MHz (1.222), and temperature at 31°C. The main area is titled 'Create RAID Volume' and contains the following settings:

- Name: Volume1
- RAID Level: RAID0 (Stripe)
- Select Disks:
 - PCIe 1.0, PCIe SSD 07941B0E00001513, 238.4GB (X)
 - PCIe 2.0, Seagate BarraCuda 510 SSD 2P256CM30011 7MS0079S, 238.4GB (X)
- Strip Size: 64KB
- Capacity (MB): 488392

A 'Create volume' button is highlighted at the bottom of the settings area. On the right side, a legend lists navigation keys: F12 for screen selection, Enter/Db1 for item selection, +/- for options, F1 for help, F3 for defaults, F10 for save/exit, F11 for print screen, F12 for BIOS flash, and ESC/Right Click for exit. A note at the bottom right states: 'Create a volume with the settings specified above'.

10. Then, enter the RAID Volume to check the details of RAID 0.



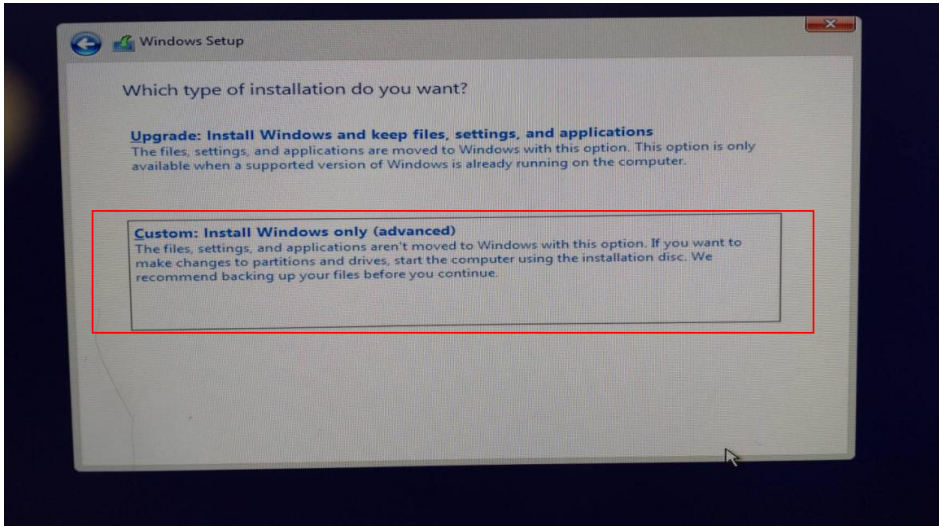
11. After checking, press “F10” again to Save & Exit.

12. When the system reboot automatically, press “F9” to select the bootable device and start the installation of OS.

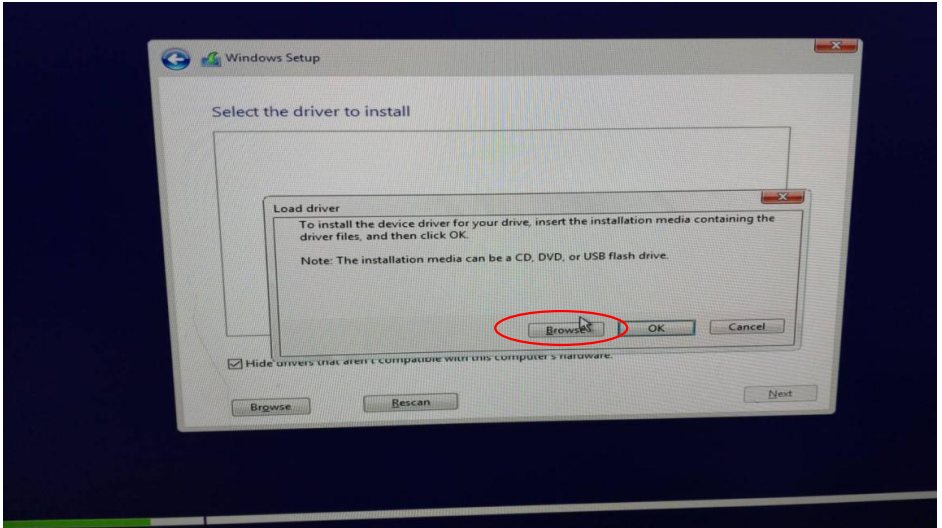


How to install the RAID controller driver during Windows OS installation?

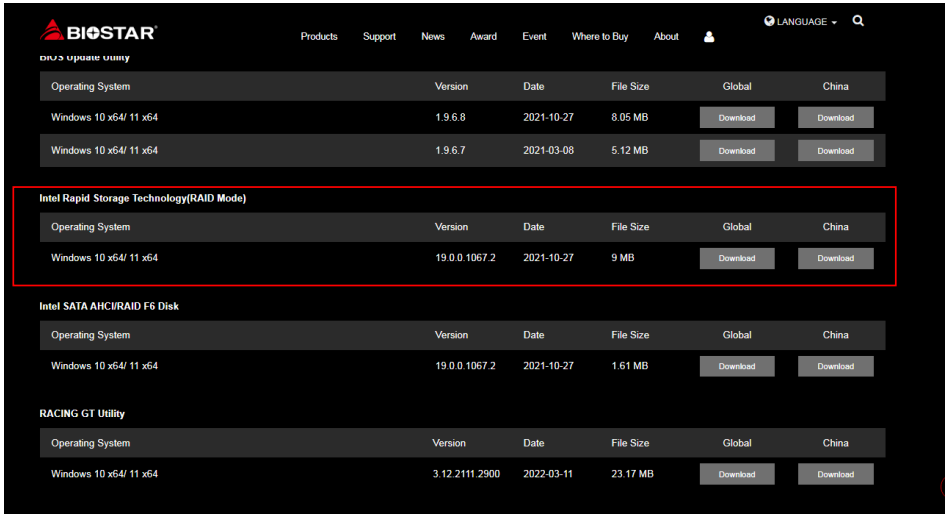
1. Boot the computer via Windows installation disc. And follow the instruction on the screen to star installing the windows.
2. Choose a type of installation, click Custom: Install Windows only (advanced).



3. Choose Load Driver, then click Browse.



You can go to the download page of your product on BIOSTAR website. Download the driver below Intel Rapid Storage Technology(RAID Mode) and save it to your USB flash drive.



4. Select VMD folder in your USB flash drive and click Next to finish the installation.

