

**TOORX**  
FITNESS IN MOTION

# INSTRUCTION



## BRX55 COMFORT

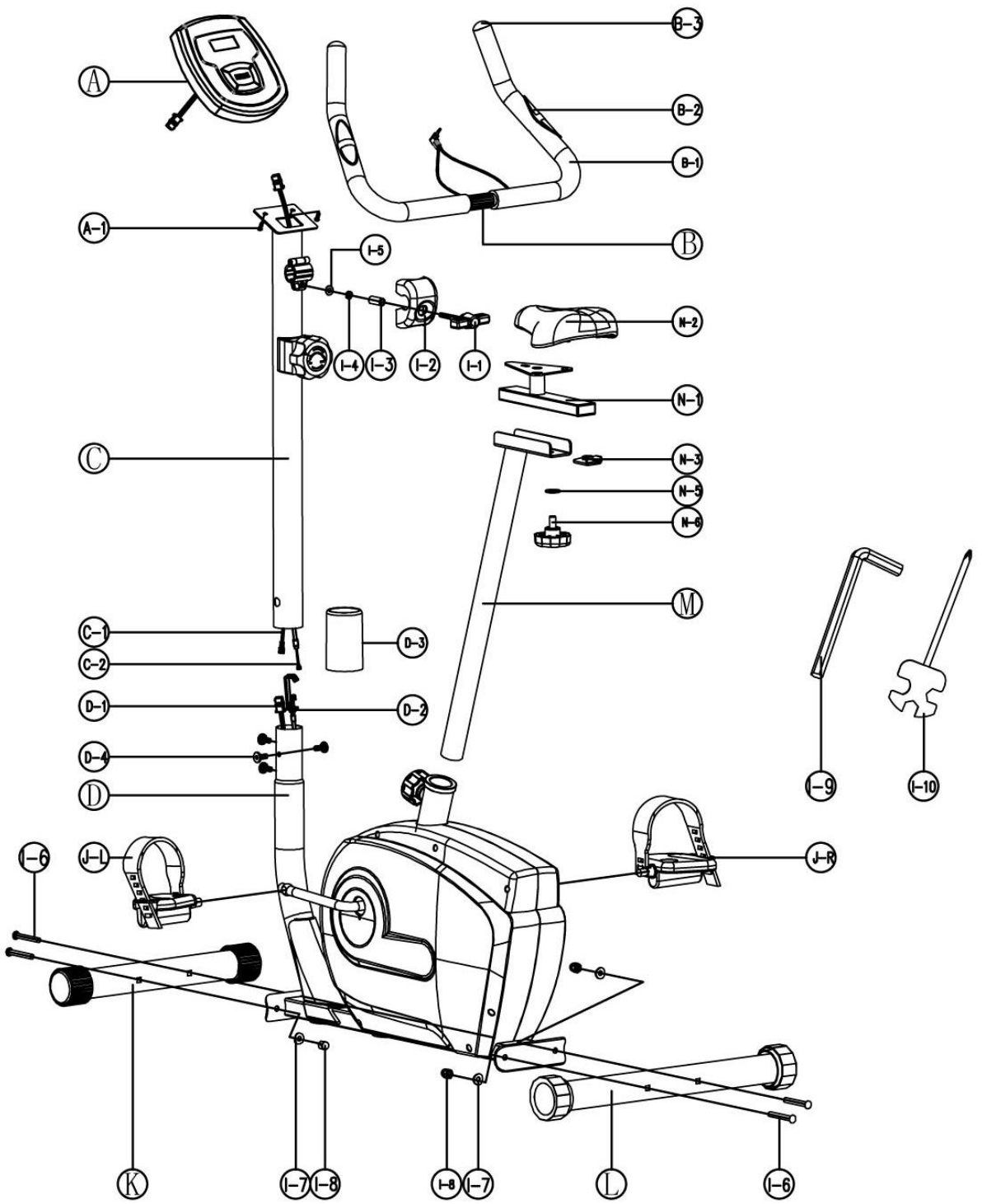


Cod : GRLDTOORXBRX55CT

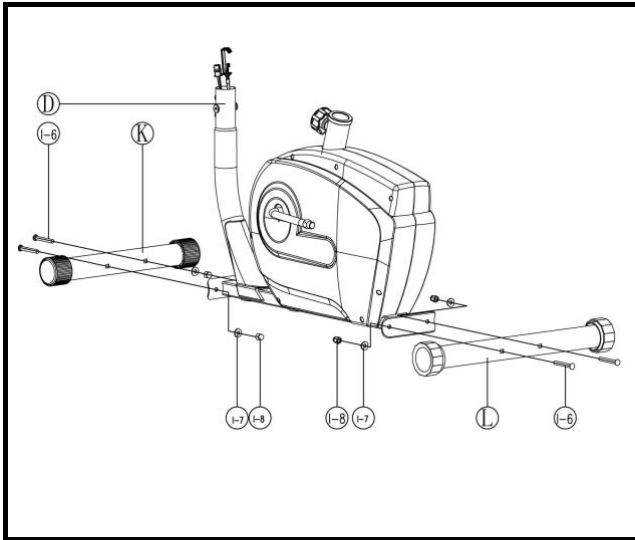
Rev : 00

Ed : 02/20





# ASSEMBLY INSTRUCTIONS

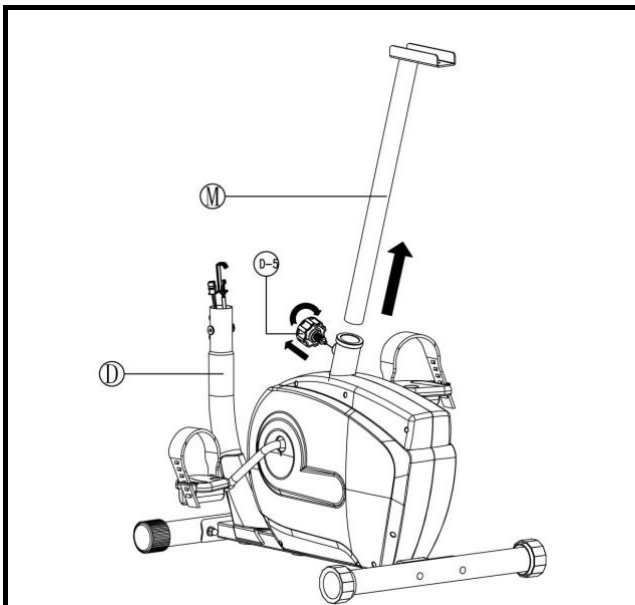
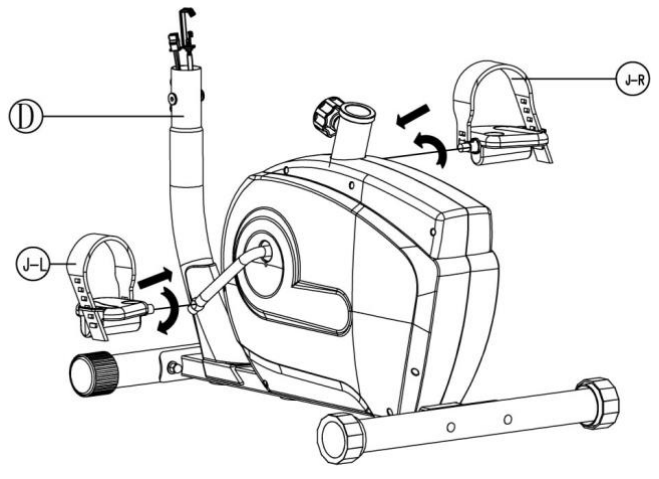


## Step 1

Assemble the rear and front stabilizer (L&K) with 4 bolts (I-6), 4 nuts (I-8) and 4 washers (I-7).

## Step 2

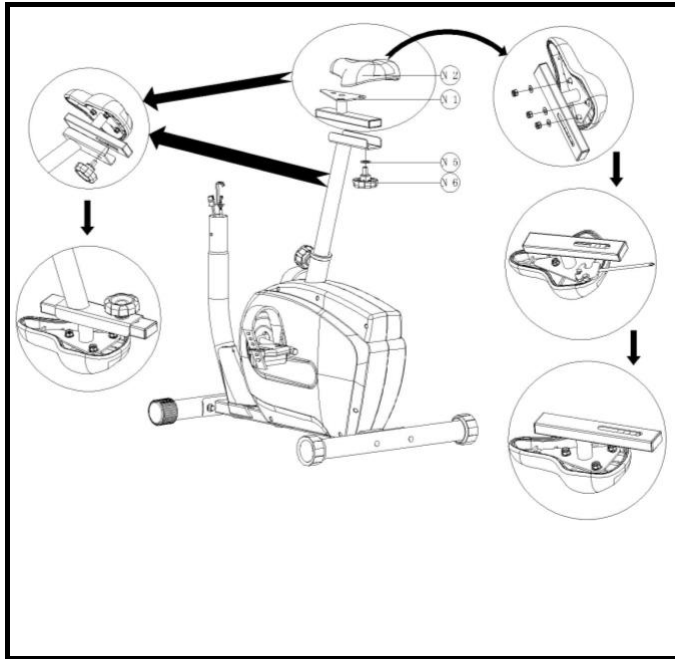
Assemble the left hand pedal (J-L) and the right hand pedal (J-R) to the hand crank.



## Step 3

Insert the seat post (M) into the main frame through the plastic sleeve. Select the ideal hole position on the seat post. Insert the knob into the hole. Tighten fully the knob.

# ASSEMBLY INSTRUCTIONS



## Step 4

Connect the saddle (N-2) and the slider (N-1) with three bolts and washers.

Attach the slider onto the top of the seat post and secure using the horizontal adjusting knob (N-6) and one flat washer (N-5).

## Step 5

Assemble the cables of the exercise computer between the main frame and the handlebar post as shown in the right sketch.

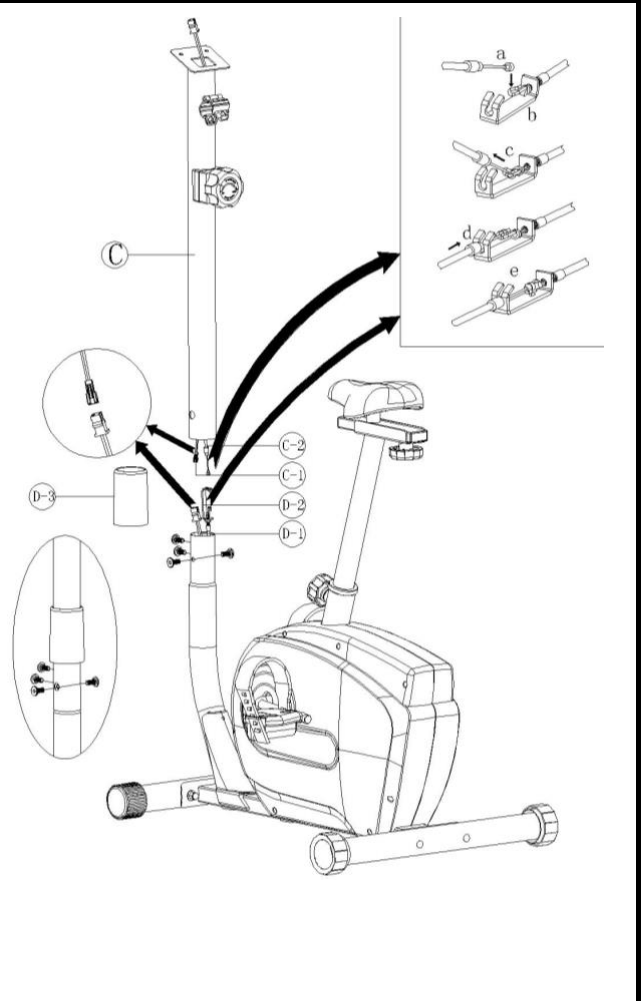
Follow the instructions below to assemble the tension cable.

Pass through the handlebar post (C) from the plastic cover (D-3).

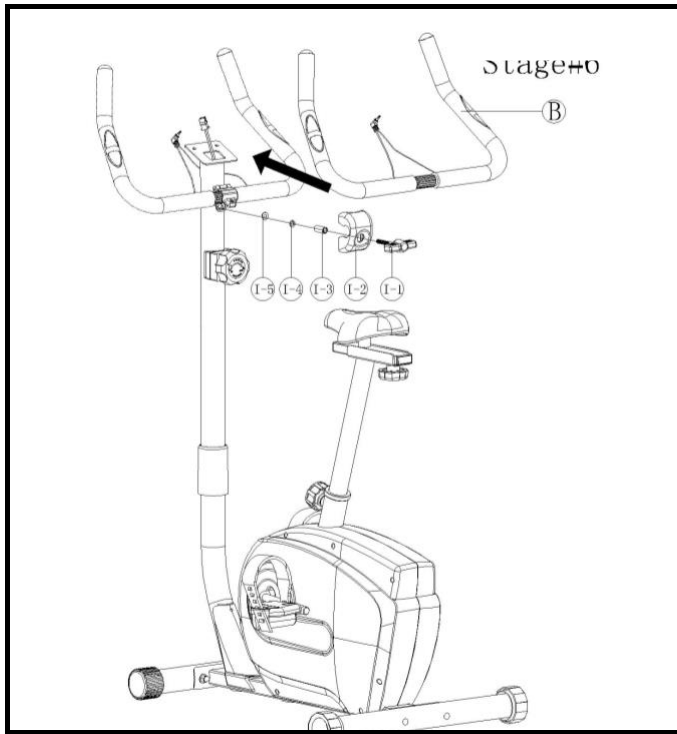
Connect the computer cable up and down cable (C-1 & D-1), connect the tension cable up and down (C-2 & D-2).

Fix the handlebar post to the main frame after the above two steps. Fasten those four screws and washers to fix the handlebar post, move the plastic cover to right position.

Assemble the handlebar (B) to the bracket on the handlebar post with two semicircular washers (I-2) and screws (I-1).



# ASSEMBLY INSTRUCTIONS



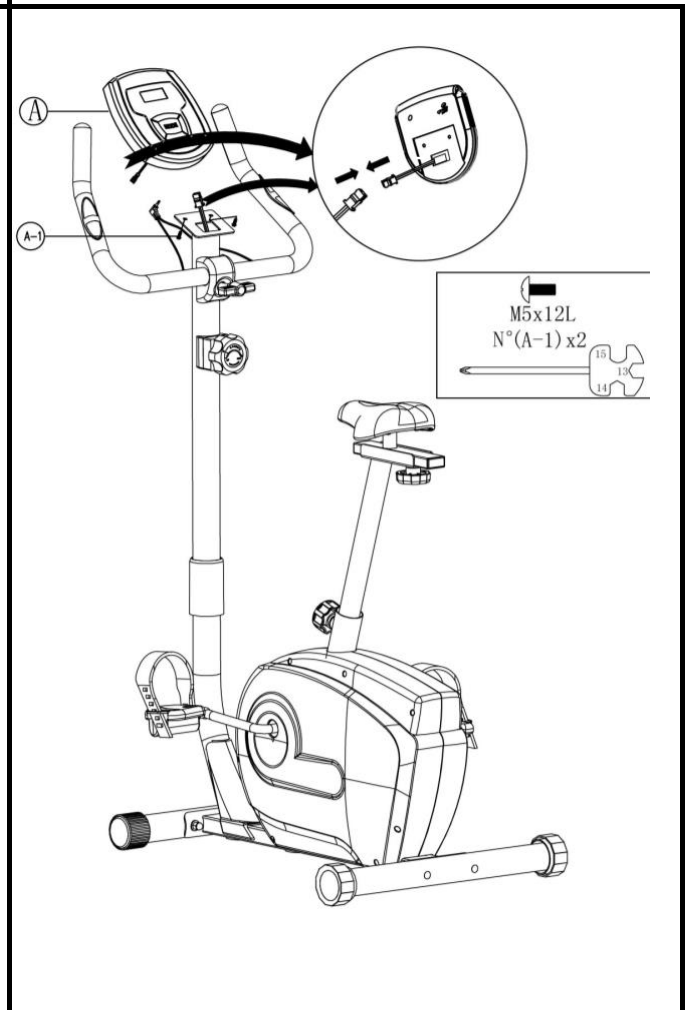
## Step 6

Attach the handlebar (B) to the handlebar post between the steel covers, assemble the plastic cover (I-2) over the steel cover, secure the steel cover assembly using one flat washer (I-5), one spring washer (I-4), one bushing (I-3) and one T-knob (I-1).

## Step 7

Plug in the cable between the computer and the handlebar post.

Fix the computer with handlebar post with two screws.



# PARTS LIST

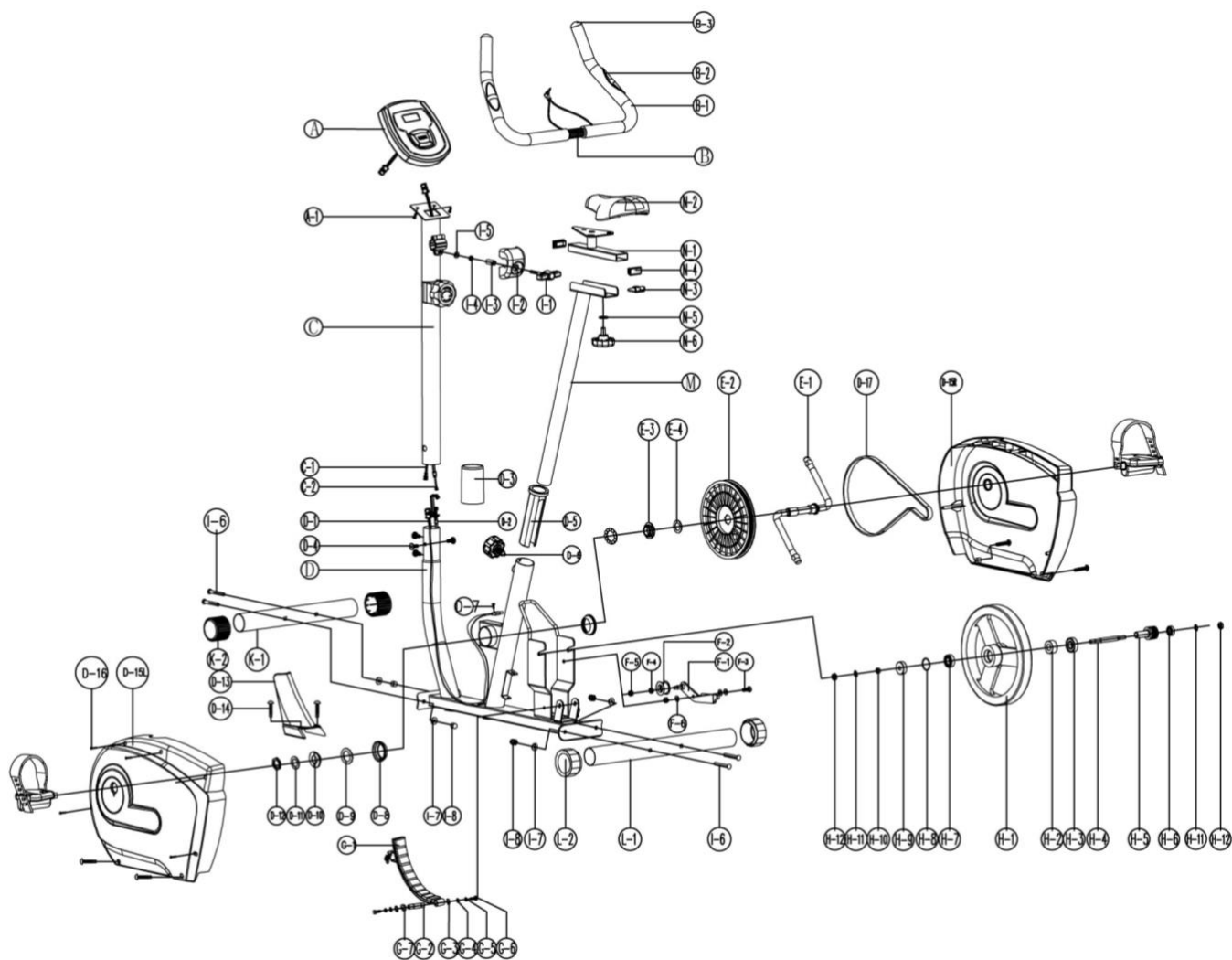
NO.	DESCRIPTION	Q'TY
A	Computer	1SET
A-1	Cone cross screw	2PCS
B	Handlebar set	1PCS
B-1	End cap	2PCS
B-2	Foam grip	2PCS
B-3	Hand pulse sensor	1SET
C	Handlebar post set	1PCS
C-1	Cable(Upper)	1PCS
C-2	Tension controller(Upper)	1PCS
D	Main frame	1PCS
D-1	Cable(Lower)	1PCS
D-2	Tension controller(Lower)	1PCS
D-3	Handlebar post plastic cover	1PCS
D-4	Hex. Screw	4PCS
D-5	Seatpost plastic	1PCS
D-6	Knob for seat post	1PCS
D-7	Sensor connection	1PCS
D-8	Triangle screw	1PCS
D-9	Bottom bracket	2PCS
D-10	Ball retainer	2PCS
D-11	Left thread	1PCS
D-12	Have tooth washer	1PCS
D-13	Hex. nut	1PCS
D-14	Handlebar post cover	1PCS
D-15	Tumbler cross self-drilling screw	6PCS
D-16L	Chain cover(Left)	1PCS
D-16R	Chain cover(Right)	1PCS
D-17	Cone cross screw	5PCS
D-18	Drive belt	1PCS
E	Crank set	1SET
E-1	Crank	1PCS
E-2	Plastic belt pully	1PCS
E-3	Right thread	1PCS
E-4	Without tooth washer	1PCS
F	Idler clamping set	1SET

F-1	Idler clamping	1PCS
F-2	Idler	1PCS
F-3	Hex. screw	1PCS
F-4	Sleeve	1PCS
F-5	Nylon nut	2PCS
F-6	Flat washer	3PCS
G	Magnetic control set	1SET
G-1	Magnetic control	1PCS
G-2	Bearing	1PCS
G-3	Washer	2PCS
G-4	Flat washer	2PCS
G-5	Spring washer	2PCS
G-6	Hes. screw	2PCS
G-7	Wave washer	1PCS
H	Flywheel set	1SET
H-1	Flywheel	1PCS
H-2	One way ratchet wheel	1PCS
H-3	Deep groove ball bearing 6203	1PCS
H-4	Mandril	1PCS
H-5	Pulley	1PCS
H-6	Deep groove ball bearing 6003	1PCS
H-7	Flat washer	1PCS
H-8	Deep groove ball bearing 6300	1PCS
H-9	Sleeve	1PCS
H-10	Deep groove ball bearing 6000	1PCS
H-11	Nut	5PCS
H-12	Starlike washer	2PCS
I-1	T-knob	1PCS
I-2	Handlebar post cover	1PCS
I-3	Sleeve	1PCS
I-4	Spring washer	1PCS
I-5	Flat washer	1PCS
I-6	Semicircular washer	4PCS
I-7	Carriage screw	4PCS
I-8	Cap nut	4PCS
I-9	Hex. wrench	1PCS
I-10	Harpoon wrench	1PCS
J-R&L	Pedal	1SET
J-1	Plastic belt pully	1PCS

J-2	Right thread	1PCS
J-3	Crank	1PCS
K	Front stabilizer set	1PCS
K-1	Front stabilizer	1PCS
K-2	Front stabilizer end cap	2PCS
L	Rear stabilizer set	1PCS
L-1	Rear stabilizer	1PCS
L-2	Rear stabilizer end cap	2PCS
M	Seat post set	1SET
M-1	Seat post	1PCS
N	Slider set	1SET
N-1	slider	1PCS
N-2	Saddle	1PCS
N-3	Slider fixed set	1PCS
N-4	End cap	2PCS
N-5	Flat washer	1PCS
N-6	horizontal adjusting knob	1PCS



# COMPLETE BIKE ASSEMBLY



# EXERCISE COMPUTER



## **SPECIFICATIONS:**

TIME.....	00:00-99.59
SPEED.....	0:0-99.9 ML/H
DISTANCE.....	0:00-999.9 ML
ODOMETER*(IFHAVE).....	0-9999 ML
PULSE*(IFHAVE).....	40-240BPM
CALORIES.....	0.0-9999KCAL

## **KEYFUNCTIONS:**

MODE: This key lets you to select and lock on to a particular function you want.

## **OPERATION PROCEDURES:**

### **1. AUTO ON/OFF**

- ◆ The system turns on when any key is pressed or when it receives an signal input from the speed sensor
- ◆ The system turns off automatically when the sensor has no signal input or no key are pressed for Approximately 4 minutes.

### **2. RESET:**

The unit can be reset by either changing battery or pressing the mode key for 3 seconds.

### **3. MODE**

To choose SCAN or LOCK if you do not want the scan moed, press the MODE key when the pointer on the function you want which begins blinking.

#### 4. FUNCTIONS:

- TIME** Press the MODE key until the pointer advance to TIME. The total working time will be shown.
- SPEED** Press the MODE key until the pointer advance to SPEED. The total working time will be shown.
- DISTANCE** Press the MODE key until the pointer advances to DISTANCE. The distance of each workout will be displayed.
- ODOMETER** Press the MODE key until the pointer advances to ODOMETER. The total accumulated distance will be shown.
- \* (IF HAVE) PULSE** Press the MODE key until the pointer advance to PULSE. User's current heart rate will be displayed in beats per minute.
- Place the palms of your hands on both of the Contact pads (or put ear-clip to ear), and wait for 30 seconds for the most accurate reading.
- CALORIES** Press the MODE key until the pointer advance to CALORIES. The calories burned will be displayed.
- SCAN** Automatic display of the following functions in the order shown: TIME-SPEED-DISTANCE-PULSE (if have)-CALORIES (repeat).
- BATTERY** This monitor uses one or two (if have PULSEE function) batteries. If improper display on monitor, please reinstall the batteries to have a good result.



GARLANDO SPA  
Via Regione Piemonte, 32 - Zona Industriale D1  
15068 - Pozzolo Formigaro (AL) - Italy  
[www.toorx.it](http://www.toorx.it) - [info@toorx.it](mailto:info@toorx.it)